

**Printed copies are
 for reference only.**

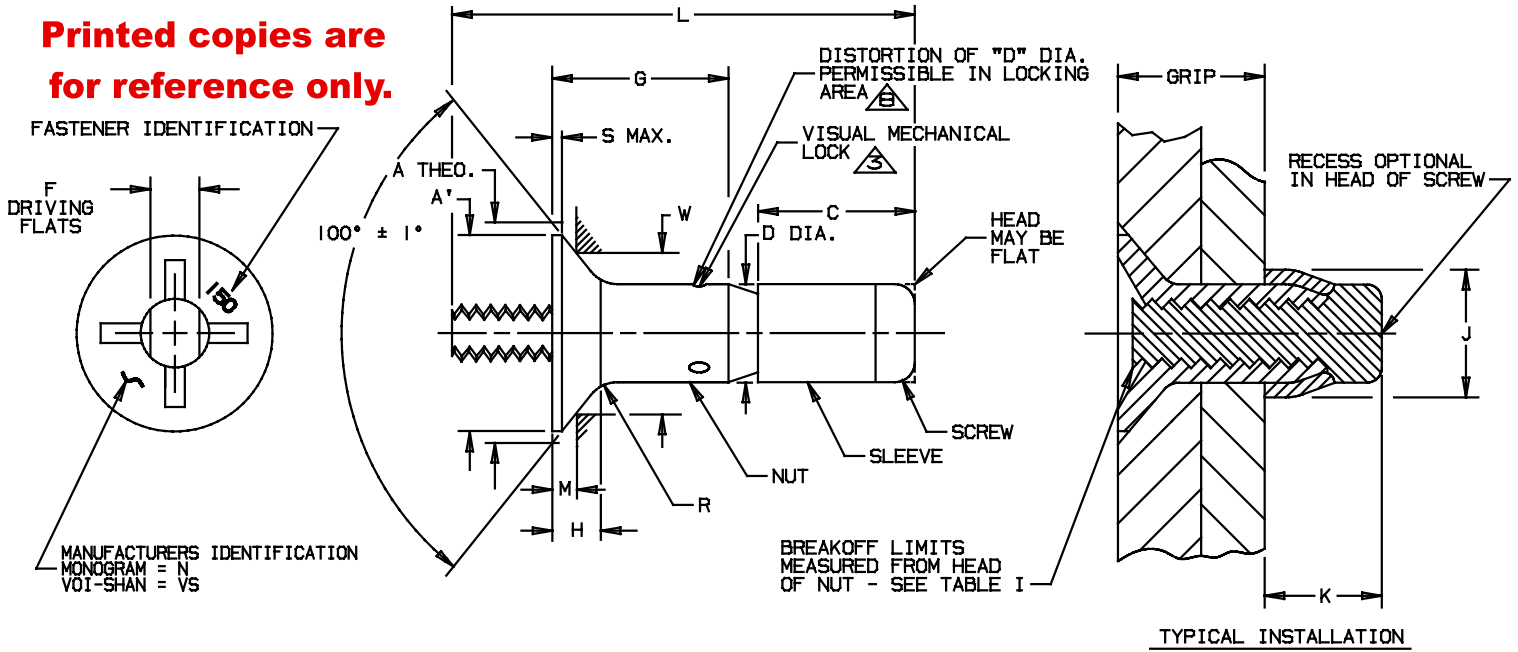


TABLE I

PART NUMBER	NOM. DIA.		A DIA. THEO. $\triangle 10$		A' DIA. MIN. $\triangle 10$		C MAX.		D DIA.		F FLATS		H REF. $\triangle 10$		J DIA. MAX.		K MAX.	
	INCH	mm	INCH	mm	INCH	mm	INCH	mm	INCH	mm	INCH	mm	INCH	mm	INCH	mm	INCH	mm
PLT150-5-()	.1635	4,153	.332 .325	8,43 8,25	.296	7,52	.285	7,24	.1645 .1625	4,178 4,128	.086 .081	2,18 2,06	.069	1,75	.244	6,20	.257	6,53
PLT150-6-()	.1980	5,029	.385 .378	9,78 9,60	.342	8,69	.320	8,13	.1990 .1970	5,055 5,004	.104 .099	2,64 2,51	.077	1,96	.300	7,62	.288	7,31
PLT150-8-()	.2590	6,579	.507 .499	12,88 12,67	.463	11,76	.375	9,52	.2600 .2580	6,604 6,553	.135 .130	3,43 3,30	.102	2,59	.384	9,75	.320	8,13
PLT150-10-()	.3105	7,887	.635 .626	16,13 15,90	.577	14,66	.440	11,18	.3115 .3095	7,912 7,861	.152 .147	3,86 3,73	.134	3,40	.427	10,85	.396	10,06
PLT150-12-()	.3735	9,487	.762 .752	19,35 19,10	.696	17,68	.525	13,34	.3745 .3725	9,512 9,462	.185 .180	4,70 4,57	.160	4,06	.516	13,11	.473	12,01

TABLE I (CONT.)

PART NUMBER	M GAGE PROT.		R RAD.		S MAX.		W GAGE DIA.		BREAK-OFF LIMITS		HOLE SIZE		PREVAILING TORQUE MIN. $\triangle 10$		DOUBLE SHEAR STRENGTH MIN.		TENSILE STRENGTH MIN.	
	INCH	mm	INCH	mm	INCH	mm	INCH	mm	INCH	mm	INCH	mm	IN-LBS	Nm	LBS.	daN	LBS.	daN
PLT150-5-()	.0276 .0239	0,701 0,607	.040 .035	1,02 0,88	.012	0,30	.2671 .2669	6,785 6,779	+0.020 -0.068	+0.51 -1.73	.168 .165	4,27 4,19	1.0	0,113	4680	2080	1350	600
PLT150-6-()	.0250 .0190	0,635 0,482	.050 .045	1,27 1,14	.015	0,38	.3272 .3270	8,311 8,305	+0.015 -0.073	+0.38 -1.85	.202 .199	5,13 5,05	1.5	0,170	6900	3060	2100	930
PLT150-8-()	.0327 .0263	0,831 0,668	.060 .055	1,53 1,39	.015	0,38	.4320 .4318	10,973 10,967	+0.010 -0.078	+0.25 -1.98	.263 .260	6,68 6,60	2.5	0,282	11800	5240	3650	1620
PLT150-10-()	.0390 .0320	0,991 0,812	.070 .060	1,78 1,52	.020	0,51	.5451 .5449	13,846 13,840	+0.010 -0.083	+0.25 -2,11	.315 .312	8,00 7,92	3.5	0,400	17000	7560	5200	2310
PLT150-12-()	.0452 .0378	1,148 0,960	.070 .060	1,78 1,52	.023	0,58	.6582 .6580	16,719 16,713	+0.010 -0.093	+0.25 -2,36	.378 .375	9,60 9,52	4.0	0,452	24500	10890	7500	3330

PART CODE
 EXAMPLE:

PLT150 L B - B

- GRIP LENGTH IN 16THS OF AN INCH (1.59 mm).
- NOMINAL BODY DIAMETER IN 1/32NDS OF AN INCH (0,79 mm).
- FINISH/LUBE CODE (SEE ESCBB-4).
- BASIC CODE, SELF-LOCKING BLIND FASTENER.

Fairchild
 CODE IDENT. NO.
5M902

MONOGRAM
 CODE IDENT. NO.
98524

U.S. PATENT NO. 3643544.

APPROVED DATE
 19 JANUARY 1971

REV. LETTER AND DATE
ECN #1015
"AA" 03-26-01

NOTICE: THIS DRAWING IS PART OF THE PROPRIETARY ARTICLE HEREIN DISCLOSED, OWNED BY MONOGRAM AEROSPACE FASTENERS, ANY PARTY BY ACCEPTING THIS DOCUMENT ASSUMES CUSTODY THEREOF AND AGREES: A. THE INFORMATION SET FORTH HEREIN IS GIVEN IN CONFIDENCE AND THIS DOCUMENT WILL NOT BE COPIED OR REPRODUCED IN WHOLE OR IN PART, NOR ITS CONTENTS REVEALED IN ANY MANNER TO ANY PERSON EXCEPT TO WHOM THE PURPOSE FOR WHICH IT WAS DELIVERED. B. WITHOUT THE WRITTEN CONSENT OF MONOGRAM AEROSPACE FASTENERS, THIS DOCUMENT AND THE INFORMATION CONTAINED HEREIN UNDER NO CIRCUMSTANCES WILL BE USED IN THE MANUFACTURE OR REPRODUCTION OF THE ARTICLE DISCLOSED, AND DELIVERY OF THIS DOCUMENT SHALL NOT CONSTITUTE ANY RIGHT OR LICENSE TO DO SO.

TITLE
VISU-LOK, FASTENER, BLIND INTERNALLY THREADED, EXTERNAL SLEEVE 5% CHROME STEEL (H-11) HIGH STRENGTH, 100° FLUSH HEAD SELF-LOCKING

STANDARD

PLT150

SHEET 1 OF 2



TABLE II

SECOND DASH NUMBER	GRIP RANGE \triangle \triangle \triangle				G GRIP (a)		L REF.											
	MIN.		MAX.				-5		-6		-8		-10		-12			
	INCH	mm	INCH	mm	INCH	mm	INCH	mm	INCH	mm	INCH	mm	INCH	mm	INCH	mm		
-2	.094	2,38	.156	3,97	.156	3,96	.713	18,11	.829	21,06								
-3	.157	3,98	.219	5,57	.219	5,56	.776	19,71	.892	22,66	.910	23,11	1.127	28,63				
-4	.220	5,58	.281	7,14	.281	7,14	.838	21,29	.954	24,23	.972	24,69	1.189	30,20	1.261	32,03		
-5	.282	7,15	.344	8,74	.344	8,74	.901	22,89	1.017	25,83	1.035	26,29	1.252	31,80	1.324	33,63		
-6	.345	8,75	.406	10,32	.406	10,31	.963	24,46	1.079	27,41	1.097	27,86	1.314	33,38	1.386	35,20		
-7	.407	10,33	.469	11,92	.469	11,91	1.026	26,06	1.142	29,01	1.160	29,46	1.377	34,98	1.449	36,80		
-8	.470	11,93	.531	13,49	.531	13,49	1.088	27,64	1.204	30,58	1.222	31,04	1.439	36,55	1.511	38,38		
-9	.532	13,50	.594	15,09	.594	15,09	1.151	29,24	1.267	32,18	1.285	32,64	1.502	38,15	1.574	39,98		
-10	.595	15,10	.656	16,67	.656	16,66	1.213	30,81	1.329	33,76	1.347	34,21	1.564	39,73	1.636	41,55		
-11	.657	16,68	.719	18,27	.719	18,26	1.276	32,41	1.392	35,36	1.410	35,81	1.627	41,33	1.699	43,15		
-12	.720	18,28	.781	19,84	.781	19,84	1.338	33,99	1.454	36,93	1.472	37,39	1.689	42,90	1.761	44,73		
-13	.782	19,85	.844	21,44	.844	21,44	1.401	35,59	1.517	38,53	1.535	38,99	1.752	44,50	1.824	46,33		
-14	.845	21,45	.906	23,02	.906	23,01	1.463	37,16	1.579	40,11	1.597	40,56	1.814	46,08	1.886	47,90		
-15	.907	23,03	.969	24,62	.969	24,61	1.526	38,76	1.642	41,71	1.660	42,16	1.877	47,68	1.949	49,50		
-16	.970	24,63	1.031	26,19	1.031	26,19	1.588	40,34	1.704	43,28	1.722	43,74	1.939	49,25	2.011	51,08		
-17	1.032	26,20	1.094	27,79	1.094	27,79			1.767	44,88	1.785	45,34	2.002	50,85	2.074	52,68		
-18	1.095	27,80	1.156	29,37	1.156	29,36			1.829	46,46	1.847	46,91	2.064	52,43	2.136	54,25		
-19	1.157	29,38	1.219	30,97	1.219	30,96			1.892	48,06	1.910	48,51	2.127	54,03	2.199	55,85		
-20	1.220	30,98	1.281	32,54	1.281	32,54			1.954	49,63	1.972	50,09	2.189	55,60	2.261	57,43		
-21	1.282	32,55	1.344	34,14	1.344	34,14			2.017	51,23	2.035	51,69	2.252	57,20	2.324	59,03		
-22	1.345	34,15	1.406	35,72	1.406	35,71			2.079	52,81	2.097	53,26	2.314	58,78	2.386	60,60		
-23	1.407	35,73	1.469	37,32	1.469	37,31			2.142	54,41	2.160	54,86	2.377	60,38	2.449	62,20		
-24	1.470	37,33	1.531	38,89	1.531	38,89			2.204	55,98	2.222	56,44	2.439	61,95	2.511	63,78		
-25	1.532	38,90	1.594	40,49	1.594	40,49			2.267	57,58	2.285	58,04	2.502	63,55	2.574	65,38		
-26	1.595	40,50	1.656	42,07	1.656	42,06			2.329	59,16	2.347	59,61	2.564	65,13	2.636	66,95		
-27	1.657	42,08	1.719	43,67	1.719	43,66			2.392	60,76	2.410	61,21	2.627	66,73	2.699	68,55		
-28	1.720	43,68	1.781	45,24	1.781	45,24			2.454	62,33	2.472	62,79	2.689	68,30	2.761	70,13		
-29	1.782	45,25	1.844	46,84	1.844	46,84			2.517	63,93	2.535	64,39	2.752	69,90	2.824	71,73		
-30	1.845	46,85	1.906	48,42	1.906	48,41			2.579	65,51	2.597	65,96	2.814	71,48	2.886	73,30		
-31	1.907	48,43	1.969	50,02	1.969	50,01			2.642	67,11	2.660	67,56	2.877	73,08	2.949	74,90		
-32	1.970	50,03	2.031	51,59	2.031	51,59			2.704	68,68	2.722	69,14	2.939	74,65	3.011	76,47		

(a) "G" TOLERANCES: FOR -5 & -6 SIZES $+0.030$ ($+0,762$); FOR -8 & -10 SIZES $+0.040$ ($+1,016$); FOR -12 SIZES $+0.050$ ($+1,270$)
 -0.010 ($-0,254$); -0.010 ($-0,254$); -0.010 ($-0,254$)

PROCUREMENT SPECIFICATION: ESCBB-10.
 MATERIAL: NUT, SCREW: 5% CHROME STEEL (H-11) PER AMS6487.
 SLEEVE: INCONEL X-750 PER AMS5667 OR AMS5682,
 OR A-286 PER AMS5731, AMS5732 OR AMS5737.
 HEAT TREAT: NUT & SCREW: ROCKWELL "C" 48-53.
 SLEEVE: AS REQUIRED FOR PERFORMANCE.
 FINISH: (-) NUT & SCREW: CADMIUM PLATE PER NAS672 (.0003 MIN THICKNESS)
 EXCEPT THERMAL INDICATOR MAY BE OMITTED.
 SUPPLEMENTARY CHROMATE TREATMENT PER QQ-P-416
 AFTER BAKE, COLOR NUT BLACK.
 SLEEVE: CADMIUM PLATE PER QQ-P-416, TYPE I OR TYPE II,
 CLASS 2 OR CLASS 3.
 L NUT & SLEEVE: ALUMINUM COAT PER NAS 4006.
 SCREW: CADMIUM PLATE PER NAS672 (.0003 MIN THICKNESS)
 EXCEPT THERMAL INDICATOR MAY BE OMITTED.
 SUPPLEMENTARY CHROMATE TREATMENT PER QQ-P-416
 AFTER BAKE.
 LUBRICATION: LUBRICANTS LISTED BELOW MAY BE APPLIED TO ANY OR ALL
 COMPONENTS IF REQUIRED FOR PERFORMANCE. DRY FILM LUBE
 PER MIL-L-46010 TYPE I OR EVERLUBE 812 PER MIL-L-81329,
 PARAFFIN WAX, CETYL ALCOHOL PER MIL-L-87132, AND/OR
 W/M CARBO-WAX.

GENERAL NOTES: (CONTINUE)
 4 HEAD MARKING ON NUT DEPRESSED .010 IN. (0,26 mm) MAXIMUM.
 5 STANDARD FINISHES AND LUBRICANTS ARE SHOWN ABOVE. SEE ESCBB-4 FOR SPECIAL
 FINISHES AND/OR LUBRICANTS, IF REQUIRED.
 6 CONCENTRICITY OF NUT HEAD CONICAL SURFACE TO "D" DIAMETER SHALL BE WITHIN
 .005 IN. (0,13 mm) T.I.R., EXCEPT OVER INDENTATIONS.
 7 STANDARD GRIP LENGTHS ARE SHOWN IN TABLE II, SHORTER OR LONGER GRIPS THAN
 THOSE LISTED MAY BE AVAILABLE AS SPECIALS. ON GRIP LENGTHS SHORTER THAN
 THOSE LISTED, THE BREAKOFF LIMITS AND PREVAILING TORQUE VALUES SHOWN IN
 TABLE I DO NOT APPLY.
 8 DISTORTION OF "D" DIAMETER SHALL NOT PREVENT INSERTION OF THE
 FASTENER INTO A RING GAUGE OF LENGTH EQUAL TO ONE DIAMETER AND
 DIAMETER EQUAL TO MAXIMUM "D" + .001". FORCE FOR INSERTION
 SHALL NOT EXCEED FIVE (5) POUNDS (22.23 NEWTONS)
 9 HALF-GRIP SIZES MAY BE ORDERED BY ADDING (.5) TO THE GRIP DASH NUMBERS
 EXAMPLE: PLT150-6-4.5 INDICATES A NOMINAL GRIP LENGTH OF 4.5 16THS
 (.281" = 7.14mm) THE GRIP RANGE FOR THESE HALF GRIP SIZES
 WILL BE NOMINAL GRIP $+0.031/-0.030$ ($+0,79/-0,79$ mm), THE BASIC
 "G" DIMENSION WILL BE MAXIMUM GRIP ± 0.031 ($\pm 0,79$ mm) AND THE
 OVERALL SCREW LENGTH "L" DIMENSION MAY VARY AT THE
 MANUFACTURER'S OPTION
 10. DIMENSIONS "A", "A'" AND "H" ARE FOR ENGINEERING REFERENCE PURPOSES
 ONLY AND ARE NOT TO BE USED FOR INSPECTION PURPOSES. THESE
 DIMENSIONS ARE THEORETICAL VALUES DERIVED FROM "D", "S", "M", "W"
 AND HEAD ANGLE DIMENSIONS.

- GENERAL NOTES:
 1 OUTSIDE DIAMETER OF HEAD OF SCREW AND OUTSIDE DIAMETER OF SLEEVE
 SHALL NOT BE GREATER THAN MAXIMUM "D" DIAMETER.
 2 FASTENERS SHALL BE FREE OF ALL LOOSE OR HANGING BURRS.
 3 LOCKING FEATURE CONSISTS OF THREE (3) INDENTATIONS LOCATED 120° APART
 ON THE PERIPHERY OF THE NUT COMPONENT AND APPROXIMATELY .040 IN. (1,02 mm)
 ABOVE THE INTERSECTION OF THE NUT NOSE ANGLE AND O.D. (MEAN GRIP OF
 FASTENER).
 11. DIMENSIONS ARE EXCLUSIVE OF LUBRICATION.

Fairchild
 CODE IDENT. NO.
5M902

MONOGRAM
 CODE IDENT. NO.
98524

U.S. PATENT NO. 3643544.

APPROVED DATE
 19 JANUARY 1971
 REV. LETTER AND DATE
 ECN #1015
 "AA" 03-26-01

NOTICE: THIS DRAWING IS PART OF THE PROPRIETARY ARTICLE HEREIN
 DISCLOSED, OWNED BY MONOGRAM AEROSPACE FASTENERS. ANY PARTY
 BY ACCEPTING THIS DOCUMENT ASSUMES CUSTODY THEREOF AND AGREES:
 A. THE INFORMATION SET FORTH HEREIN IS GIVEN IN CONFIDENCE AND THIS
 DOCUMENT WILL NOT BE COPIED OR REPRODUCED IN WHOLE OR IN PART,
 NOR ITS CONTENTS REVEALED IN ANY MANNER TO ANY PERSON EXCEPT TO
 MEET THE PURPOSE FOR WHICH IT WAS DELIVERED.
 B. WITHOUT THE WRITTEN CONSENT OF MONOGRAM AEROSPACE FASTENERS,
 THIS DOCUMENT AND THE INFORMATION CONTAINED HEREIN UNDER NO
 CIRCUMSTANCES WILL BE USED IN THE MANUFACTURE OR REPRODUCTION
 OF THE ARTICLE DISCLOSED, AND DELIVERY OF THIS DOCUMENT SHALL NOT
 CONSTITUTE ANY RIGHT OR LICENSE TO DO SO.

TITLE
 VISU-LOK, FASTENER, BLIND
 INTERNALLY THREADED, EXTERNAL SLEEVE
 5% CHROME STEEL (H-11)
 HIGH STRENGTH, 100° FLUSH HEAD
 SELF-LOCKING

STANDARD
PLT150
SHEET 2 OF 2