

**Printed copies are
for reference only.**

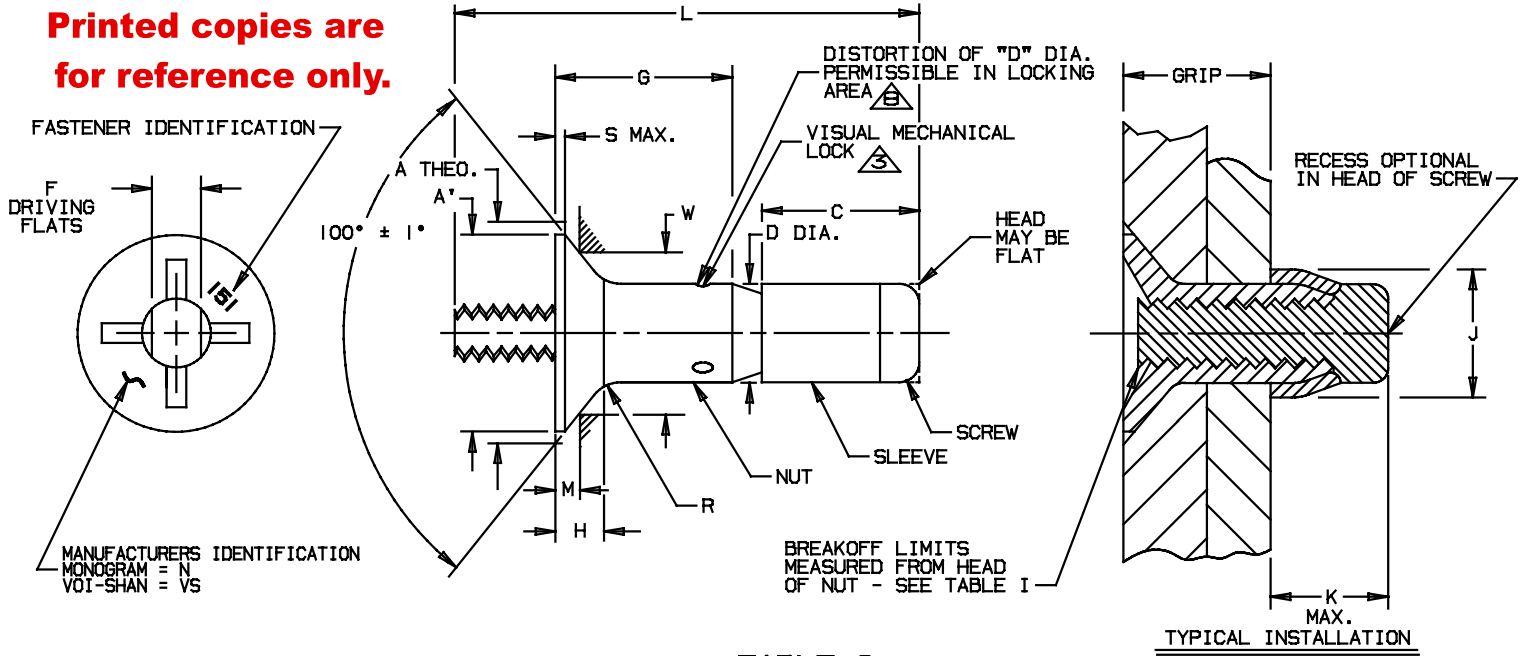


TABLE I

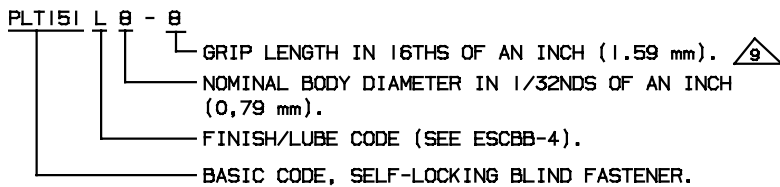
PART NUMBER	NOM. DIA.		A DIA. Δ THEO.		A* DIA. Δ MIN.		C MAX.		D DIA.		F FLATS		H Δ REF.		J DIA. MAX.		K MAX.	
	INCH	mm	INCH	mm	INCH	mm	INCH	mm	INCH	mm	INCH	mm	INCH	mm	INCH	mm	INCH	mm
PLT151-5-(*)	.1790	4,547	.332 .325	8,44 8,25	.296	7,51	.315	8,00	.1800 .1780	4,572 4,521	.086 .081	2,19 2,05	.063	1,60	.244	6,20	.300	7,62
PLT151-6-(*)	.2140	5,436	.385 .378	9,78 9,60	.342	8,68	.350	8,89	.2150 .2130	5,461 5,410	.104 .099	2,65 2,51	.070	1,78	.300	7,62	.333	8,46
PLT151-8-(*)	.2750	6,985	.507 .499	12,88 12,67	.463	11,76	.385	9,78	.2760 .2740	7,011 6,959	.135 .130	3,43 3,30	.096	2,44	.384	9,76	.366	9,30
PLT151-10-(*)	.3260	8,280	.635 .626	16,13 15,90	.577	14,65	.470	11,94	.3270 .3250	8,306 8,255	.152 .147	3,87 3,73	.120	3,25	.427	10,85	.447	11,36
PLT151-12-(*)	.3890	9,881	.762 .752	19,36 19,10	.696	17,67	.555	14,10	.3900 .3880	9,906 9,855	.185 .180	4,70 4,57	.154	3,91	.516	13,11	.527	13,39

TABLE I (CONT.)

PART NUMBER	M GAGE PROT.		R RAD.		S MAX.		W GAGE DIA.		BREAK-OFF LIMITS Δ		HOLE SIZE		PREVAILING TORQUE MIN. Δ		DOUBLE SHEAR STRENGTH MIN.		TENSILE STRENGTH MIN.	
	INCH	mm	INCH	mm	INCH	mm	INCH	mm	INCH	mm	INCH	mm	IN-LBS	Nm	LBS.	daN	LBS.	daN
PLT151-5-(*)	.0276 .0239	0,701 0,607	.040 .035	1,02 0,88	.012	0,31	.2671 .2669	6,785 6,779	+0.020 -0.068	+0,51 -1,73	.183 .180	4,65 4,57	1.0	0,11	4680	2080	1350	600
PLT151-6-(*)	.0250 .0190	0,635 0,482	.050 .045	1,27 1,14	.015	0,39	.3272 .3270	8,311 8,305	+0.015 -0.073	+0,39 -1,86	.218 .215	5,54 5,46	1.5	0,16	6900	3060	2100	930
PLT151-8-(*)	.0327 .0263	0,831 0,668	.060 .055	1,53 1,39	.015	0,39	.4320 .4318	10,973 10,967	+0.010 -0.078	+0,26 -1,99	.279 .276	7,09 7,01	2.5	0,28	11800	5240	3650	1620
PLT151-10-(*)	.0390 .0320	0,991 0,812	.070 .060	1,78 1,52	.020	0,51	.5451 .5449	13,846 13,840	+0.010 -0.083	+0,26 -2,11	.330 .327	8,38 8,30	3.5	0,39	17000	7560	5200	2310
PLT151-12-(*)	.0452 .0378	1,148 0,960	.070 .060	1,78 1,52	.023	0,59	.6582 .6580	16,719 16,713	+0.010 -0.093	+0,26 -2,37	.393 .390	9,98 9,90	4.0	0,45	24500	10890	7500	3330

(*) SEE TABLE II FOR SECOND DASH NUMBER AND APPROVED CALLOUT.

PART CODE EXAMPLE:



Fairchild
 CODE IDENT. NO.
5M902

U.S. PATENT NO. 3643544.

MONOGRAM
 CODE IDENT. NO.
98524

APPROVED DATE
 21 APRIL 1971

REV. LETTER AND DATE
ECN #1024
"W" 03-29-01

NOTICE: THIS DRAWING IS PART OF THE PROPRIETARY ARTICLE HEREIN DISCLOSED, OWNED BY MONOGRAM AEROSPACE FASTENERS, ANY PARTY BY ACCEPTING THIS DOCUMENT ASSUMES CUSTODY THEREOF AND AGREES: A. THE INFORMATION SET FORTH HEREIN IS GIVEN IN CONFIDENCE AND THIS DOCUMENT WILL NOT BE COPIED OR REPRODUCED IN WHOLE OR IN PART, NOR ITS CONTENTS REVEALED IN ANY MANNER TO ANY PERSON EXCEPT TO MEET THE PURPOSE FOR WHICH IT WAS DELIVERED. B. WITHOUT THE WRITTEN CONSENT OF MONOGRAM AEROSPACE FASTENERS, THIS DOCUMENT AND THE INFORMATION CONTAINED HEREIN UNDER NO CIRCUMSTANCES WILL BE USED IN THE MANUFACTURE OR REPRODUCTION OF THE ARTICLE DISCLOSED, AND DELIVERY OF THIS DOCUMENT SHALL NOT CONSTITUTE ANY RIGHT OR LICENSE TO DO SO.

TITLE
VISU-LOK, FASTENER, BLIND INTERNALLY THREADED, EXTERNAL SLEEVE HIGH STRENGTH, 5% CHROME STEEL (H-11) 100° FLUSH HEAD, SELF-LOCKING 1/64 INCH (0,40 mm) OVERSIZE

STANDARD

PLT151
SHEET 1 OF 2

