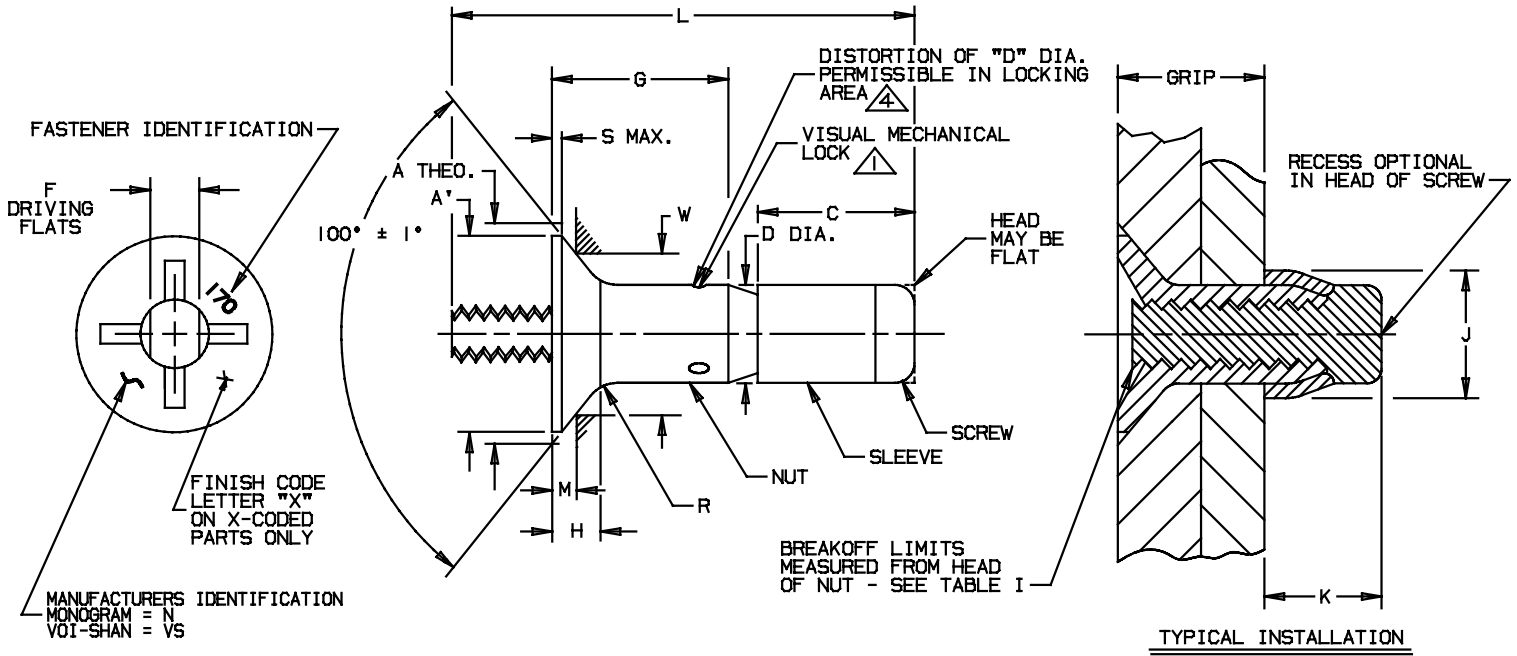


Printed copies are for reference only.



HEAD MARKINGS DEPRESSED .010 INCH (0,254 mm MAX.) (POSITION OPTIONAL)

TABLE I

| PART NUMBER | NOM. DIA. | | A DIA. THEO. | | A' DIA. MIN. | | C MAX. | | D DIA. | | F FLATS | | H REF. | | J DIA. MAX. | | K MAX. | |
|--------------|-----------|-------|--------------|----------------|--------------|-------|--------|-------|----------------|----------------|--------------|--------------|--------|------|-------------|-------|--------|-------|
| | INCH | mm | INCH | mm | INCH | mm | INCH | mm | INCH | mm | INCH | mm | INCH | mm | INCH | mm | INCH | mm |
| PLT170-5-() | .1635 | 4,153 | .332 .325 | 8,43 8,25 | .296 | 7,52 | .285 | 7,24 | .1645 .1625 | 4,178 4,128 | .086 .081 | 2,18 2,06 | .069 | 1,75 | .244 | 6,20 | .257 | 6,53 |
| PLT170-6-() | .1980 | 5,029 | .385 .378 | 9,78 9,60 | .342 | 8,69 | .320 | 8,13 | .1990 .1970 | 5,055 5,004 | .104 .099 | 2,64 2,51 | .077 | 1,96 | .300 | 7,62 | .288 | 7,31 |
| PLT170-8-() | .2590 | 6,579 | .507 .499 | 12,88 12,67 | .463 | 11,76 | .355 | 9,02 | .2600 .2580 | 6,604 6,553 | .135 .130 | 3,43 3,30 | .102 | 2,59 | .384 | 9,75 | .320 | 8,13 |
| PLT170-10-() | .3105 | 7,887 | .635 .626 | 16,13 15,90 | .577 | 14,66 | .440 | 11,18 | .3115 .3095 | 7,912 7,861 | .152 .147 | 3,86 3,73 | .134 | 3,40 | .427 | 10,85 | .396 | 10,06 |
| PLT170-12-() | .3735 | 9,487 | .762 .752 | 19,35 19,10 | .696 | 17,68 | .525 | 13,34 | .3745 .3725 | 9,512 9,462 | .185 .180 | 4,70 4,57 | .160 | 4,06 | .516 | 13,11 | .473 | 12,01 |

TABLE I (CONT.)

| PART NUMBER | M GAGE PROT. | | R RAD. | | S MAX. | | W GAGE DIA. | | BREAK-OFF LIMITS | | HOLE SIZE | | PREVAILING TORQUE MIN. | | DOUBLE SHEAR STRENGTH MIN. | | TENSILE STRENGTH MIN. | |
|--------------|----------------|----------------|--------------|--------------|--------------|----------------|------------------|------------------|------------------|--------------|--------------|-----|------------------------|-------|----------------------------|------|-----------------------|---|
| | INCH | mm | INCH | mm | INCH | mm | INCH | mm | INCH | mm | INCH | mm | IN-LBS | Nm | LBS. | N | LBS. | N |
| PLT170-5-() | .0276 .0238 | 0,701 0,604 | .030 .010 | 0,76 0,25 | .012 0,30 | .2671 .2667 | 6,784 6,774 | +0.020 -0.068 | +0,51 -1,73 | .168 .165 | 4,27 4,19 | 1.0 | 0,113 | 3150 | 14010 | 900 | 4000 | |
| PLT170-6-() | .0299 .0259 | 0,760 0,658 | .030 .015 | 0,76 0,38 | .015 0,38 | .3147 .3143 | 7,993 7,983 | +0.015 -0.073 | +0,38 -1,85 | .202 .199 | 5,13 5,05 | 1.5 | 0,170 | 4600 | 20460 | 1400 | 6230 | |
| PLT170-8-() | .0353 .0307 | 0,897 0,907 | .030 .015 | 0,76 0,38 | .015 0,38 | .4245 .4241 | 10,782 10,772 | +0.010 -0.078 | +0,25 -1,98 | .263 .260 | 6,68 6,60 | 2.5 | 0,282 | 7900 | 35140 | 2100 | 9340 | |
| PLT170-10-() | .0409 .0357 | 1,039 0,907 | .040 .020 | 1,02 0,51 | .020 0,51 | .5389 .5385 | 13,688 13,678 | +0.010 -0.088 | +0,25 -2,23 | .315 .312 | 8,00 7,92 | 3.5 | 0,400 | 11350 | 50480 | 3600 | 16010 | |
| PLT170-12-() | .0466 .0407 | 1,184 1,034 | .040 .020 | 1,02 0,51 | .023 0,58 | .6532 .6528 | 16,591 16,581 | +0.010 -0.093 | +0,25 -2,36 | .378 .375 | 9,60 9,52 | 4.0 | 0,452 | 16450 | 73170 | 5600 | 24910 | |

Fairchild

CODE IDENT. NO.
92215

MONOGRAM

CODE IDENT. NO.
98524

U.S. PATENT NO. 3643544, OTHER PATENTS PENDING.

APPROVED DATE

"B" 09-06-90 ECN #6439

REV. LETTER AND DATE

ⓔ 04-30-98

NOTICE: THIS DRAWING IS PART OF THE PROPRIETARY ARTICLE HEREIN DISCLOSED, OWNED BY MONOGRAM AEROSPACE FASTENERS, ANY PARTY BY ACCEPTING THIS DOCUMENT ASSUMES CUSTODY THEREOF AND AGREES: A. THE INFORMATION SET FORTH HEREIN IS GIVEN IN CONFIDENCE AND THIS DOCUMENT WILL NOT BE COPIED OR REPRODUCED IN WHOLE OR IN PART, NOR ITS CONTENTS REVEALED IN ANY MANNER TO ANY PERSON EXCEPT TO THE PERSON FOR WHOM IT WAS DELIVERED. B. WITHOUT THE WRITTEN CONSENT OF MONOGRAM AEROSPACE FASTENERS, THIS DOCUMENT AND THE INFORMATION CONTAINED HEREIN UNDER NO CIRCUMSTANCES WILL BE USED IN THE MANUFACTURE OR REPRODUCTION OF THE ARTICLE DISCLOSED, AND DELIVERY OF THIS DOCUMENT SHALL NOT CONSTITUTE ANY RIGHT OR LICENSE TO DO SO.

TITLE
**VISU-LOK, FASTENER, BLIND
 INTERNALLY THREADED, EXTERNAL SLEEVE
 TITANIUM
 100° FLUSH HEAD, SELF LOCKING
 75 KSI SHEAR**

STANDARD

PLT 170

SHEET 1 OF 2



TABLE II

| SECOND DASH NUMBER | GRIP RANGE Δ | | | | G GRIP (a) | | L REF. | | | | | | | | | |
|--------------------|---------------------|-------|-------|-------|------------|-------|-----------|--------|-------|--------|-------|--------|-------|--------|-------|--------|
| | MIN. | | MAX. | | INCH | mm | -5 | | -6 | | -8 | | -10 | | -12 | |
| | INCH | mm | INCH | mm | | | INCH | mm | INCH | mm | INCH | mm | INCH | mm | INCH | mm |
| -2 | .094 | 2.39 | .156 | 3.96 | .156 | 3.96 | .733 | 18.62 | .853 | 22.67 | | | | | | |
| -3 | .157 | 3.99 | .219 | 5.56 | .219 | 5.56 | .795 | 20.19 | .916 | 23.27 | | | | | | |
| -4 | .220 | 5.59 | .281 | 7.14 | .281 | 7.14 | .858 | 21.80 | .978 | 24.84 | .006 | 23.978 | 1.158 | 29.413 | 1.242 | 31.547 |
| -5 | .282 | 7.16 | .344 | 8.74 | .344 | 8.74 | .920 | 23.37 | 1.041 | 26.44 | 1.069 | 27.153 | 1.221 | 31.013 | 1.304 | 33.122 |
| -6 | .345 | 8.76 | .406 | 10.31 | .406 | 10.31 | .983 | 24.97 | 1.103 | 28.016 | 1.131 | 28.727 | 1.283 | 32.588 | 1.367 | 34.722 |
| -7 | .407 | 10.34 | .469 | 11.91 | .469 | 11.91 | 1.045 | 26.543 | 1.166 | 29.616 | 1.194 | 30.328 | 1.346 | 34.188 | 1.429 | 36.230 |
| -8 | .470 | 11.94 | .531 | 13.49 | .531 | 13.49 | 1.108 | 28.143 | 1.228 | 31.191 | 1.256 | 31.902 | 1.408 | 35.763 | 1.492 | 36.897 |
| -9 | .532 | 13.51 | .594 | 15.11 | .594 | 15.11 | 1.170 | 29.718 | 1.291 | 32.791 | 1.319 | 33.503 | 1.471 | 37.363 | 1.554 | 39.472 |
| -10 | .595 | 15.11 | .656 | 16.66 | .656 | 16.66 | 1.233 | 31.318 | 1.381 | 35.366 | 1.381 | 35.077 | 1.533 | 38.938 | 1.617 | 41.072 |
| -11 | .657 | 16.69 | .719 | 18.26 | .719 | 18.26 | 1.295 | 32.893 | 1.416 | 35.966 | 1.444 | 36.678 | 1.596 | 40.538 | 1.679 | 42.647 |
| -12 | .720 | 18.29 | .781 | 19.84 | .781 | 19.84 | 1.358 | 34.493 | 1.478 | 37.541 | 1.506 | 38.252 | 1.658 | 42.113 | 1.742 | 44.247 |
| -13 | .782 | 19.86 | .844 | 21.44 | .844 | 21.44 | 1.420 | 36.068 | 1.541 | 39.141 | 1.569 | 39.853 | 1.721 | 43.713 | 1.804 | 45.822 |
| -14 | .845 | 21.46 | .906 | 23.01 | .906 | 23.01 | 1.483 | 37.668 | 1.603 | 40.716 | 1.631 | 41.427 | 1.783 | 45.288 | 1.867 | 47.422 |
| -15 | .907 | 23.04 | .969 | 24.61 | .969 | 24.61 | 1.545 | 39.243 | 1.666 | 42.316 | 1.694 | 43.028 | 1.846 | 46.888 | 1.929 | 48.997 |
| -16 | .970 | 24.64 | 1.031 | 26.19 | 1.031 | 26.19 | 1.608 | 40.843 | 1.728 | 43.891 | 1.756 | 44.602 | 1.908 | 48.463 | 1.992 | 50.597 |
| -17 | 1.032 | 26.21 | 1.094 | 27.79 | 1.094 | 27.79 | | | 1.791 | 45.491 | 1.819 | 46.203 | 1.971 | 50.063 | 2.054 | 52.172 |
| -18 | 1.095 | 27.81 | 1.156 | 29.36 | 1.156 | 29.36 | | | 1.853 | 47.066 | 1.881 | 47.777 | 2.033 | 51.638 | 2.117 | 53.772 |
| -19 | 1.157 | 29.39 | 1.219 | 30.96 | 1.219 | 30.96 | | | 1.916 | 50.241 | 1.944 | 49.378 | 2.096 | 53.238 | 2.179 | 55.347 |
| -20 | 1.220 | 30.99 | 1.281 | 32.54 | 1.281 | 32.54 | | | 1.978 | 51.841 | 2.006 | 50.952 | 2.158 | 54.813 | 2.242 | 56.947 |
| -21 | 1.282 | 32.56 | 1.344 | 34.14 | 1.344 | 34.14 | AVAILABLE | | 2.041 | 53.416 | 2.069 | 52.553 | 2.221 | 56.413 | 2.304 | 58.522 |
| -22 | 1.345 | 34.16 | 1.406 | 35.71 | 1.406 | 35.71 | | | 2.103 | 55.016 | 2.131 | 54.127 | 2.283 | 57.988 | 2.367 | 60.122 |
| -23 | 1.407 | 35.74 | 1.469 | 37.31 | 1.469 | 37.31 | | | 2.166 | 56.591 | 2.194 | 55.728 | 2.346 | 59.588 | 2.429 | 61.697 |
| -24 | 1.470 | 37.34 | 1.531 | 38.89 | 1.531 | 38.89 | | | 2.228 | 58.191 | 2.256 | 57.302 | 2.408 | 61.163 | 2.492 | 63.297 |
| -25 | 1.532 | 38.91 | 1.594 | 40.49 | 1.594 | 40.49 | | | 2.291 | 58.191 | 2.319 | 58.903 | 2.471 | 62.763 | 2.554 | 64.872 |
| -26 | 1.595 | 40.51 | 1.656 | 42.06 | 1.656 | 42.06 | | | 2.353 | 59.766 | 2.381 | 60.477 | 2.533 | 64.338 | 2.617 | 66.472 |
| -27 | 1.657 | 42.09 | 1.719 | 43.66 | 1.719 | 43.66 | | | 2.416 | 61.366 | 2.444 | 62.078 | 2.596 | 65.938 | 2.679 | 68.047 |
| -28 | 1.720 | 43.69 | 1.781 | 45.24 | 1.781 | 45.24 | | | 2.478 | 62.941 | 2.506 | 63.652 | 2.658 | 67.513 | 2.742 | 69.647 |
| -29 | 1.782 | 45.26 | 1.844 | 46.84 | 1.844 | 46.84 | | | 2.541 | 64.541 | 2.569 | 65.253 | 2.721 | 69.113 | 2.804 | 71.222 |
| -30 | 1.845 | 46.86 | 1.906 | 48.41 | 1.906 | 48.41 | | | 2.603 | 66.116 | 2.631 | 66.827 | 2.783 | 70.688 | 2.867 | 72.822 |
| -31 | 1.907 | 48.44 | 1.969 | 50.01 | 1.969 | 50.01 | | | 2.666 | 67.716 | 2.694 | 68.428 | 2.846 | 72.288 | 2.929 | 74.397 |
| -32 | 1.970 | 50.04 | 2.031 | 51.59 | 2.031 | 51.59 | | | 2.728 | 69.291 | 2.756 | 70.002 | 2.908 | 73.863 | 2.992 | 75.997 |

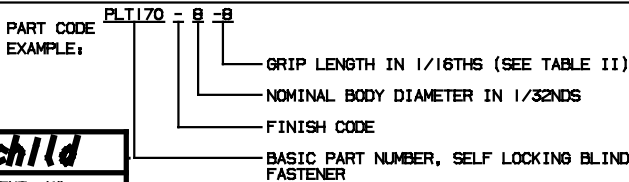
(a) "G" TOLERANCES: FOR -5 & -6 SIZES $+0.030$ ($+0.762$); -0.010 (-0.254); FOR -8 & -10 SIZES $+0.040$ ($+1.016$); -0.010 (-0.254); FOR -12 SIZES $+0.050$ ($+1.270$); -0.010 (-0.254)

PROCUREMENT SPECIFICATION: ESCBB-9 CLASS 2
 MATERIAL: NUT & SCREW: 6Al-4V TITANIUM PER AMS 4928 OR AMS 4967
 SLEEVE: CORROSION RESISTANT STEEL
 HEAT TREAT: NUT & SCREW: HEAT TREAT TO 160 KSI UTS MIN
 SLEEVE: AS REQUIRED FOR PERFORMANCE
 FINISH: (-) NUT & SCREW: NONE
 SLEEVE: PASSIVATE PER QQ-P-35 (MIL-S-5002)
 (L) NUT: ALUMINUM COAT PER NAS 4006
 SLEEVE: PASSIVATE PER QQ-P-35 (MIL-S-5002) AND ALUMINUM COAT PER NAS 4006
 SCREW: NONE
 LUBRICATION: LUBRICANTS LISTED MAY BE APPLIED TO ANY OR ALL COMPONENTS IF REQUIRED FOR PERFORMANCE. DRY FILM LUBE MoS2 PER MIL-L-46010 TYPE I OR EVERLUBE 812 PER MIL-L-81329, CETYL ALCOHOL PER MIL-L-87132 AND/OR PARAFFIN WAX.

GENERAL NOTES:
 1. LOCKING FEATURE CONSISTS OF THREE (3) INDENTATIONS LOCATED 120° APART ON THE PERIPHERY OF THE NUT COMPONENT
 2. STANDARD FINISHES AND LUBRICANTS AS SHOWN ON LEFT. REFER TO SPECIFICATION ESCBB-4 FOR SPECIAL FINISHES AND/OR LUBRICANTS, IF REQUIRED
 3. HALF-GRIP SIZES MAY BE ORDERED BY ADDING (.5) TO THE GRIP DASH NUMBERS
 EXAMPLE: PLT170-6-4.5 INDICATES A NOMINAL GRIP LENGTH OF 4.5 (16THS) (.281" = 7.14mm) THE GRIP RANGE FOR THESE HALF GRIP SIZES WILL BE NOMINAL GRIP $+0.031/-0.030$ ($+0.79/-0.79$ mm) THE BASIC "G" DIMENSION WILL BE MAXIMUM GRIP ± 0.031 (± 0.79 mm) AND THE OVERALL SCREW LENGTH "L" DIMENSION MAY VARY AT THE MANUFACTURER'S OPTION
 4. DISTORTION OF "D" DIAMETER SHALL NOT PREVENT INSERTION OF THE FASTENER INTO A RING GAUGE OF LENGTH EQUAL TO ONE DIAMETER AND DIAMETER EQUAL TO MAXIMUM "D" + .001". FORCE FOR INSERTION SHALL NOT EXCEED FIVE (5) POUNDS (22.23 NEWTONS)

FINISH: (X) NUT: I.V.D. ALUMINUM COAT PER MIL-C-83488
 SCREW: KAL-GARD ANN-RO #1012 OPTIONAL
 SLEEVE: PASSIVATE PER QQ-P-35 (MIL-S-5002)
 KAL-GARD ANN-RO #1013 OPTIONAL
 LUBRICATION: NUT: CARBO WAX, PARAFFIN WAX, TIOLON A-20, TIOLON X-20 OR CETYL ALCOHOL AS REQUIRED FOR PERFORMANCE
 SCREW & SLEEVE: LUBRICANTS USED ON SLEEVES AND SCREWS MUST NOT CONTAIN SULFIDES (e.g. MoS2) OR GRAPHITE, EXAMPLE OF ACCEPTABLE LUBRICANTS ARE TIOLON X-20 AND A-20, KAL-GARD FC-2, AND PARAFFIN WAX. AS REQUIRED FOR PERFORMANCE

5.) OUTSIDE DIAMETER OF HEAD OF SCREW AND OUTSIDE DIAMETER OF SLEEVE SHALL NOT BE GREATER THAN MAXIMUM "D" DIAMETER.
 6.) CONCENTRICITY OF NUT HEAD "A" DIAMETER TO "D" DIAMETER SHALL BE WITHIN .005 T.I.R. (EXCEPT OVER INDENTS).
 7.) REMOVE ALL LOOSE OR HANGING BURRS.
 8.) DIMENSIONS ARE EXCLUSIVE OF LUBRICATION.
 9. STANDARD GRIP LENGTHS ARE SHOWN IN TABLE II, SHORTER OR LONGER GRIPS THAN THOSE LISTED MAY BE AVAILABLE AS SPECIALS. ON GRIP LENGTHS SHORTER THAN THOSE LISTED, THE BREAKOFF LIMITS AND PREVAILING TORQUES SHOWN IN TABLE I DO NOT APPLY.
 10. DIMENSIONS "A", "A'" AND "H" ARE FOR ENGINEERING REFERENCE PURPOSES ONLY AND ARE NOT TO BE USED FOR INSPECTION PURPOSES. THESE DIMENSIONS ARE THEORETICAL VALUES DERIVED FROM "D", "S", "M", "W" AND HEAD ANGLE DIMENSIONS.



Fairchild
 CODE IDENT. NO.
92215

MONOGRAM
 CODE IDENT. NO.
98524

U.S. PATENT NO. 3643544, OTHER PATENTS PENDING.

APPROVED DATE
 "B" 09-06-90 ECN #6439
 REV. LETTER AND DATE
 (E) 04-30-98

NOTICE: THIS DRAWING IS PART OF THE PROPRIETARY ARTICLE HEREIN DISCLOSED. OWNED BY MONOGRAM AEROSPACE FASTENERS. ANY PARTY BY ACCEPTING THIS DOCUMENT ASSUMES CUSTODY THEREOF AND AGREES: A. THE INFORMATION SET FORTH HEREIN IS GIVEN IN CONFIDENCE AND THIS DOCUMENT WILL NOT BE COPIED OR REPRODUCED IN WHOLE OR IN PART, NOR ITS CONTENTS REVEALED IN ANY MANNER TO ANY PERSON EXCEPT TO MEET THE PURPOSE FOR WHICH IT WAS DELIVERED. B. WITHOUT THE WRITTEN CONSENT OF MONOGRAM AEROSPACE FASTENERS, THIS DOCUMENT AND THE INFORMATION CONTAINED HEREIN UNDER NO CIRCUMSTANCES WILL BE USED IN THE MANUFACTURE OR REPRODUCTION OF THE ARTICLE DISCLOSED, AND DELIVERY OF THIS DOCUMENT SHALL NOT CONSTITUTE ANY RIGHT OR LICENSE TO DO SO.

TITLE
VISU-LOK, FASTENER, BLIND INTERNALLY THREADED, EXTERNAL SLEEVE TITANIUM 100° FLUSH HEAD, SELF LOCKING 75 KSI SHEAR

STANDARD
PLT 170
SHEET 2 OF 2