

**Printed copies are
for reference only.**

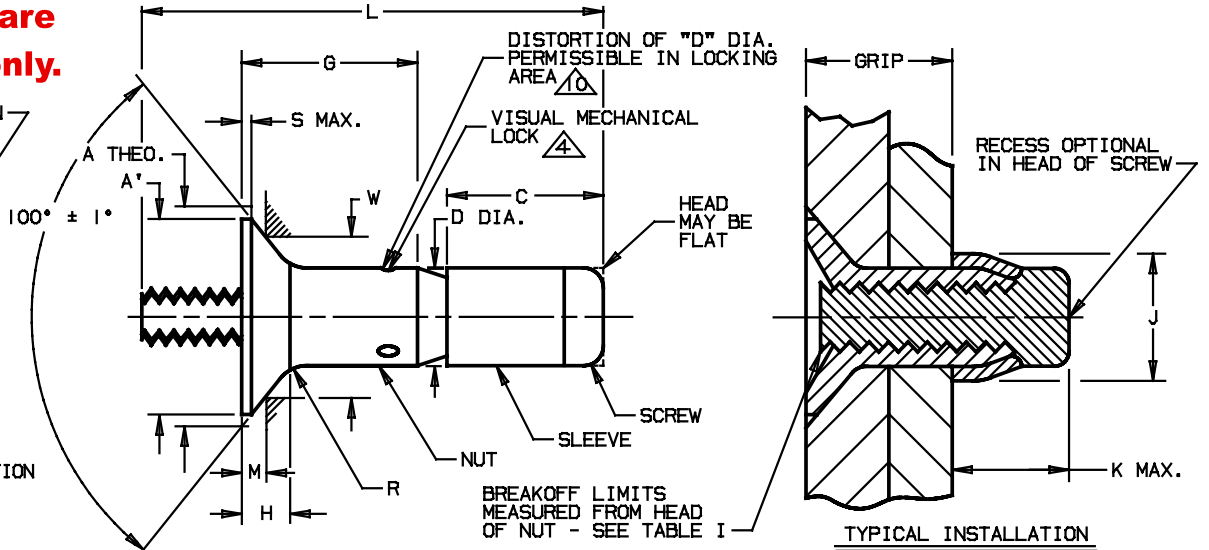
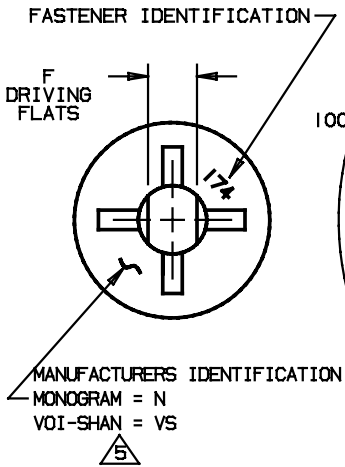


TABLE I

| PART NUMBER | NOM. DIA. | A THEO. DIA. | A' DIA. MIN. | C MAX. | D DIA. | F DRIVING FLATS | H REF. | J DIA. MAX. | K MAX. | M GAGE PROT. | R RAD. | S MAX. | W GAGE DIA. | HOLE SIZE | BREAK-OFF LIMITS | PREVAILING TORQUE IN. LBS. MIN. | DOUBLE SHEAR STRENGTH LBS. MIN. | TENSILE STRENGTH LBS. MIN. |
|----------------|-----------|--------------|--------------|--------|----------------|-----------------|--------|-------------|--------|----------------|--------------|--------|----------------|----------------|------------------|---------------------------------|---------------------------------|----------------------------|
| PLT 174-5-(*) | .1640 | .332 .325 | .296 | .285 | .1645 .1635 | .086 .081 | .069 | .244 | .257 | .0276 .0238 | .030 .010 | .012 | .2671 .2667 | .1680 .1650 | +.020 -.068 | 1.0 | 3150 | 900 |
| PLT 174-6-(*) | .2021 | .385 .378 | .342 | .320 | .2026 .2016 | .104 .099 | .077 | .300 | .288 | .0299 .0259 | .030 .015 | .015 | .3147 .3143 | .2060 .2030 | +.015 -.073 | 1.5 | 4600 | 1400 |
| PLT 174-8-(*) | .2646 | .507 .499 | .463 | .355 | .2651 .2641 | .135 .130 | .102 | .384 | .320 | .0353 .0307 | .030 .015 | .015 | .4245 .4241 | .2685 .2655 | +.010 -.078 | 2.5 | 7900 | 2100 |
| PLT 174-10-(*) | .3115 | .635 .626 | .577 | .440 | .3120 .3110 | .152 .147 | .134 | .427 | .396 | .0409 .0357 | .040 .020 | .020 | .5389 .5385 | .3150 .3120 | +.010 -.083 | 3.5 | 11350 | 3600 |
| PLT 174-12-(*) | .3740 | .762 .752 | .696 | .525 | .3745 .3735 | .185 .180 | .160 | .516 | .473 | .0468 .0407 | .040 .020 | .023 | .6532 .6528 | .3780 .3750 | +.010 -.093 | 4.0 | 16450 | 5600 |

(*) SEE TABLE II FOR SECOND DASH NUMBER AND APPROVED CALLOUT.

TABLE II

| SECOND DASH NUMBER | G GRIP | GRIP RANGE | | L REF. | | | | | SECOND DASH NUMBER | G GRIP | GRIP RANGE | | L REF. | | | | |
|--------------------|--------|------------|-------|---------|--------|--------|---------|---------|--------------------|--------|------------|-------|---------------|--------|--------|---------|---------|
| | | MIN. | MAX. | PLT 174 | | | | | | | MIN. | MAX. | PLT 174 | | | | |
| | | | | -5-(*) | -6-(*) | -8-(*) | -10-(*) | -12-(*) | | | | | -5-(*) | -6-(*) | -8-(*) | -10-(*) | -12-(*) |
| - | - | - | - | - | - | - | - | - | -17 | 1.094 | 1.032 | 1.094 | NOT AVAILABLE | 1.791 | 1.819 | 1.971 | 2.054 |
| -2 | .156 | .094 | .156 | .733 | .853 | - | - | - | -18 | 1.156 | 1.095 | 1.156 | | 1.853 | 1.881 | 2.033 | 2.117 |
| -3 | .219 | .157 | .219 | .795 | .916 | .944 | - | - | -19 | 1.219 | 1.157 | 1.219 | | 1.916 | 1.944 | 2.096 | 2.179 |
| -4 | .281 | .220 | .281 | .858 | .978 | 1.006 | 1.158 | 1.242 | -20 | 1.281 | 1.220 | 1.281 | | 1.978 | 2.006 | 2.158 | 2.242 |
| -5 | .344 | .282 | .344 | .920 | 1.041 | 1.069 | 1.221 | 1.304 | -21 | 1.344 | 1.282 | 1.344 | | 2.041 | 2.069 | 2.221 | 2.304 |
| -6 | .406 | .345 | .406 | .983 | 1.103 | 1.131 | 1.283 | 1.367 | -22 | 1.406 | 1.345 | 1.406 | | 2.103 | 2.131 | 2.283 | 2.367 |
| -7 | .469 | .407 | .469 | 1.045 | 1.166 | 1.194 | 1.346 | 1.429 | -23 | 1.469 | 1.407 | 1.469 | IN | 2.166 | 2.194 | 2.346 | 2.429 |
| -8 | .531 | .470 | .531 | 1.108 | 1.228 | 1.256 | 1.408 | 1.492 | -24 | 1.531 | 1.470 | 1.531 | | 2.228 | 2.256 | 2.408 | 2.492 |
| -9 | .594 | .532 | .594 | 1.170 | 1.291 | 1.319 | 1.471 | 1.554 | -25 | 1.594 | 1.532 | 1.594 | -5 | 2.291 | 2.319 | 2.471 | 2.554 |
| -10 | .656 | .595 | .656 | 1.233 | 1.353 | 1.381 | 1.533 | 1.617 | -26 | 1.656 | 1.595 | 1.656 | | 2.353 | 2.381 | 2.533 | 2.617 |
| -11 | .719 | .657 | .719 | 1.295 | 1.416 | 1.444 | 1.596 | 1.679 | -27 | 1.719 | 1.657 | 1.719 | DIAMETER | 2.416 | 2.444 | 2.596 | 2.679 |
| -12 | .781 | .720 | .781 | 1.358 | 1.478 | 1.506 | 1.658 | 1.742 | -28 | 1.781 | 1.720 | 1.781 | | 2.478 | 2.506 | 2.658 | 2.742 |
| -13 | .844 | .782 | .844 | 1.420 | 1.541 | 1.569 | 1.721 | 1.804 | -29 | 1.844 | 1.782 | 1.844 | 2.541 | 2.569 | 2.721 | 2.804 | |
| -14 | .906 | .845 | .906 | 1.483 | 1.603 | 1.631 | 1.783 | 1.867 | -30 | 1.906 | 1.845 | 1.906 | 2.603 | 2.631 | 2.783 | 2.867 | |
| -15 | .969 | .907 | .969 | 1.545 | 1.666 | 1.694 | 1.846 | 1.929 | -31 | 1.969 | 1.907 | 1.969 | 2.666 | 2.694 | 2.846 | 2.929 | |
| -16 | 1.031 | .970 | 1.031 | 1.608 | 1.728 | 1.756 | 1.908 | 1.992 | -32 | 2.031 | 1.970 | 2.031 | 2.728 | 2.756 | 2.908 | 2.992 | |

▲ "G" TOLERANCES: FOR -5 & -6 SIZES +.030/-.010; FOR -8 & -10 SIZES +.040/-.010; FOR -12 SIZE +.050/-.010.

U.S. PATENT NO. 3643544, OTHER PATENTS PENDING.

Fairchild
 CODE IDENT. NO.
92215

MONOGRAM
 CODE IDENT. NO.
98524

APPROVED DATE
 13 JUNE 1977

REV. LETTER AND DATE
 © 05-12-94

NOTICE: THIS DRAWING IS PART OF THE PROPRIETARY ARTICLE HEREIN DISCLOSED, OWNED BY MONOGRAM AEROSPACE FASTENERS, ANY PARTY BY ACCEPTING THIS DOCUMENT ASSUMES CUSTODY THEREOF AND AGREES: A. THE INFORMATION SET FORTH HEREIN IS GIVEN IN CONFIDENCE AND THIS DOCUMENT WILL NOT BE COPIED OR REPRODUCED IN WHOLE OR IN PART, NOR ITS CONTENTS REVEALED IN ANY MANNER TO ANY PERSON EXCEPT TO MEET THE PURPOSE FOR WHICH IT WAS DELIVERED. B. WITHOUT THE WRITTEN CONSENT OF MONOGRAM AEROSPACE FASTENERS, THIS DOCUMENT AND THE INFORMATION CONTAINED HEREIN UNDER NO CIRCUMSTANCES WILL BE USED IN THE MANUFACTURE OR REPRODUCTION OF THE ARTICLE DISCLOSED, AND DELIVERY OF THIS DOCUMENT SHALL NOT CONSTITUTE ANY RIGHT OR LICENSE TO DO SO.

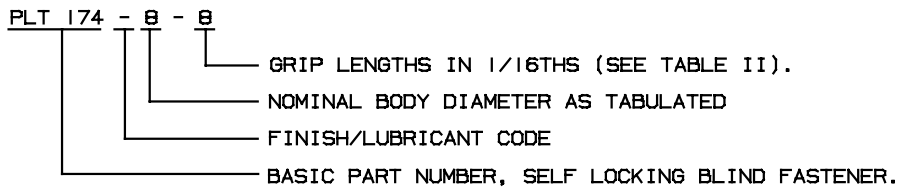
TITLE
VISU-LOK, FASTENER, BLIND INTERNALLY THREADED, EXTERNAL SLEEVE TITANIUM, 75 KSI SHEAR 100° FLUSH HEAD, SELF LOCKING GROUND SHANK

STANDARD
PLT 174
SHEET 1 OF 2

PROCUREMENT SPEC. : ESCBB-9, CLASS 4, EXCEPT AS SPECIFIED HEREIN.

- MATERIAL : NUT & SCREW : 6AL-4V TITANIUM PER AMS4928 OR AMS4967.
 SLEEVE : CORROSION RESISTANT STEEL.
- HEAT TREAT : NUT & SCREW : HEAT TREAT PER MIL-H-81200 MAX. HYDROGEN 125 PPM.
 SLEEVE : AS REQUIRED FOR PERFORMANCE.
- FINISH: "-" NUT & SCREW : NONE.
 △ SLEEVE : PASSIVATE PER MIL-S-5002 (QQ-P-35).
 "L" NUT : ALUMINUM COAT (.0002-.0007 THICK) PER NAS4006.
 SLEEVE : PASSIVATE PER QQ-P-35 (MIL-S-5002) ALUMINUM COAT (.0002-.0007 THICK) PER NAS 4006.
 SCREW : NONE.
- LUBRICANT : LUBRICANTS LISTED BELOW MAY BE APPLIED TO ANY OR ALL COMPONENTS IF REQUIRED FOR PERFORMANCE :
 △ DRY FILM LUBE MOS₂ PER MIL-L-46010 OR MIL-L-81329, WWM CARBO-WAX, PARAFFIN WAX AND/OR CETYL ALCOHOL PER MIL-L-87132.

PART CODE & EXAMPLE :



GENERAL NOTES :

- 1.) OUTSIDE DIAMETER OF HEAD OF SCREW AND OUTSIDE DIAMETER OF SLEEVE SHALL NOT BE GREATER THAN MAXIMUM "D" DIAMETER.
- 2.) CONCENTRICITY OF NUT HEAD "A" DIAMETER TO "D" DIAMETER SHALL BE WITHIN .005 T.I.R. EXCEPT OVER INDENTS.
- 3.) REMOVE ALL LOOSE OR HANGING BURRS.
4. △ LOCKING FEATURE CONSISTS OF THREE (3) INDENTATIONS LOCATED 120° APART ON THE PERIPHERY OF THE NUT COMPONENT AND APPROXIMATELY .040 ABOVE THE INTERSECTION OF THE NUT NOSE ANGLE AND O.D. (MEAN GRIP OF FASTENER).
5. △ MANUFACTURER'S IDENTIFICATION:
 LETTER "N" DESIGNATES MONOGRAM AEROSPACE FASTENERS.
 LETTERS "VS" DESIGNATE VOI-SHAN.
- 6.) HEAD MARKINGS ON NUT DEPRESSED .010 MAX. LOCATION OPTIONAL.
7. △ STANDARD FINISHES AND LUBRICANTS ARE SHOWN ABOVE. REFER TO SPECIFICATION ESCBB-4 FOR SPECIAL FINISHES AND/OR LUBRICANTS, IF REQUIRED.
8. △ HALF-GRIP SIZES MAY BE ORDERED BY ADDING (.5) TO THE GRIP DASH NUMBER.
 EXAMPLE: PLT 174-6-4.5 INDICATES A NOMINAL GRIP LENGTH OF 4.5 SIXTEENTHS = .281.
 THE GRIP RANGE FOR THESE HALF-GRIP SIZES WILL BE NOMINAL GRIP + .031/- .030.
 THE BASIC "G" DIMENSION WILL BE NOMINAL GRIP + .031 AND THE OVERALL SCREW LENGTH "L" DIMENSION MAY VARY AT MANUFACTURER'S OPTION.
9. △ GROUND SHANK VISU-LOKS SHOULD NOT BE USED, EXCEPT WITH CONSIDERABLE CAUTION, IN APPLICATIONS WHICH EXCEED APPROXIMATELY .0005 INTERFERENCE FIT, GROUND SHANK VISU-LOKS WILL PERFORM SATISFACTORILY WHEN INSTALLED IN THE TABULATED HOLE SIZES.
10. △ DISTORTION OF "D" DIAMETER SHALL NOT PREVENT INSERTION OF THE FASTENER INTO A RING GAUGE OF LENGTH EQUAL TO ONE DIAMETER AND DIAMETER EQUAL TO "D" MAX. + .001". FORCE FOR INSERTION SHALL NOT EXCEED FIVE (5) POUNDS.
11. △ DIMENSIONS "A", "A'", "H" ARE FOR ENGINEERING REFERENCE PURPOSES ONLY AND ARE NOT TO BE USED FOR INSPECTION PURPOSES. THESE DIMENSIONS ARE THEORETICAL VALUES DERIVED FROM "D", "S", "V", "W" AND HEAD ANGLE DIMENSIONS.
12. △ STANDARD GRIP LENGTHS ARE SHOWN IN TABLE II, SHORTER OR LONGER GRIPS THAN THOSE LISTED MAY BE AVAILABLE AS SPECIALS. ON GRIP LENGTHS SHORTER THAN THOSE LISTED, THE BREAKOFF LIMITS AND PREVAILING TORQUES SHOWN IN TABLE I DO NOT APPLY.
13. DIMENSIONS ARE EXCLUSIVE OF LUBRICATION.

U.S. PATENT NO. 3643544, OTHER PATENTS PENDING.

Fairchild
 CODE IDENT. NO.
92215

MONOGRAM
 CODE IDENT. NO.
98524

APPROVED DATE
 13 JUNE 1977

REV. LETTER AND DATE
 © 05-12-94

NOTICE: THIS DRAWING IS PART OF THE PROPRIETARY ARTICLE HEREIN DISCLOSED, OWNED BY MONOGRAM AEROSPACE FASTENERS, ANY PARTY BY ACCEPTING THIS DOCUMENT ASSUMES CUSTODY THEREOF AND AGREES:
 A. THE INFORMATION SET FORTH HEREIN IS GIVEN IN CONFIDENCE AND THIS DOCUMENT WILL NOT BE COPIED OR REPRODUCED IN WHOLE OR IN PART, NOR ITS CONTENTS REVEALED IN ANY MANNER TO ANY PERSON EXCEPT TO MEET THE PURPOSE FOR WHICH IT WAS DELIVERED.
 B. WITHOUT THE WRITTEN CONSENT OF MONOGRAM AEROSPACE FASTENERS, THIS DOCUMENT AND THE INFORMATION CONTAINED HEREIN UNDER NO CIRCUMSTANCES WILL BE USED IN THE MANUFACTURE OR REPRODUCTION OF THE ARTICLE DISCLOSED, AND DELIVERY OF THIS DOCUMENT SHALL NOT CONSTITUTE ANY RIGHT OR LICENSE TO DO SO.

TITLE
VISU-LOK, FASTENER, BLIND INTERNALLY THREADED, EXTERNAL SLEEVE TITANIUM, 75 KSI SHEAR 100° FLUSH HEAD, SELF LOCKING GROUND SHANK

STANDARD
PLT 174
SHEET 2 OF 2