

Printed copies are for reference only.

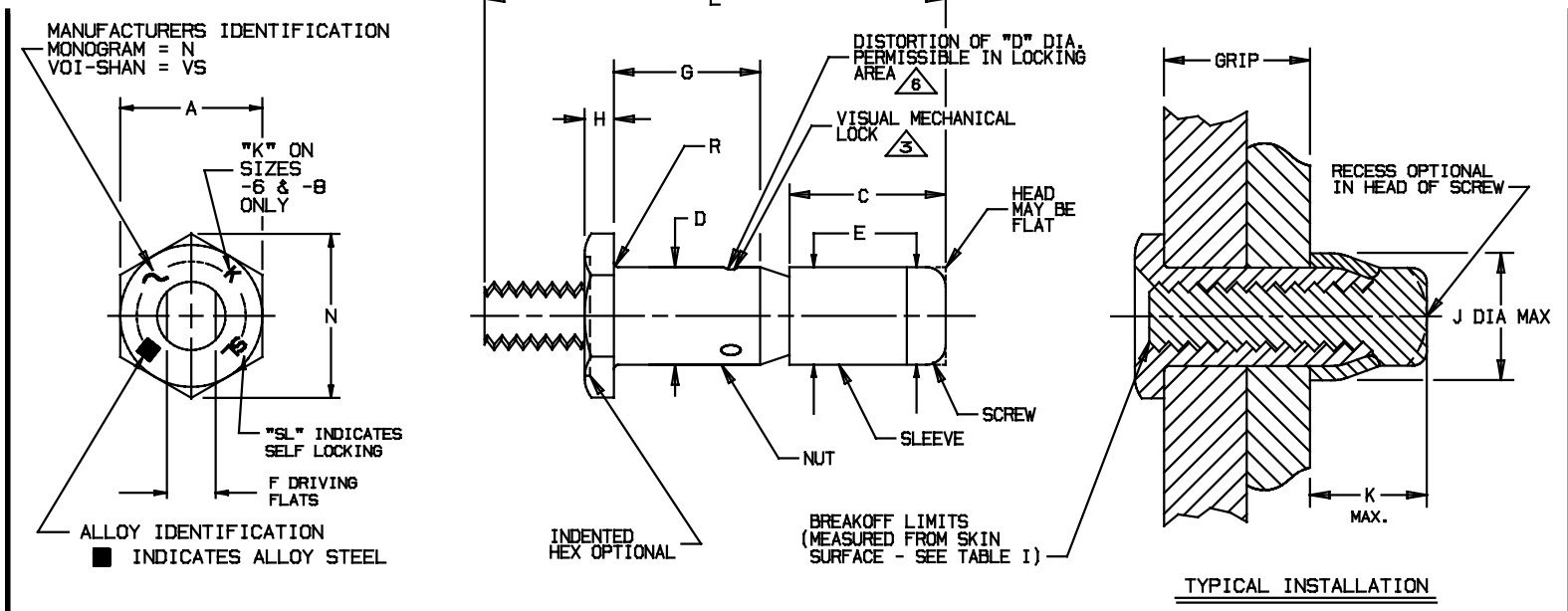


TABLE I

PART NUMBER	NOM. DIA.		A DIA.		C MAX.		D DIA.		E DIA. MAX.		F FLATS		H MAX.		J DIA. MAX.		K MAX.			
	INCH	mm	INCH	mm	INCH	mm	INCH	mm	INCH	mm	INCH	mm	INCH	mm	INCH	mm	INCH	mm		
PLT215(**)-5-(*)	.1635	4,15	.250 .244	6,35 6,20			.268	6,81	.1645 .1625	4,178 4,128	.1620	4,12	.086 .081	2,18 2,06	.096	2,44	.244	6,20	.246	6,25
PLT215(**)-6-(*)	.1890	4,80	.312 .305	7,92 7,75			.303	7,70	.1900 .1880	4,826 4,775	.1875	4,77	.104 .099	2,64 2,52	.113	2,87	.300	7,62	.281	7,14
PLT215(**)-8-(*)	.2480	6,30	.375 .367	9,52 9,32			.354	8,99	.2490 .2470	6,325 6,274	.2465	6,27	.135 .130	3,43 3,30	.135	3,43	.384	9,75	.325	8,25
PLT215(**)-10-(*)	.3105	7,89	.437 .429	11,10 10,90			.423	10,74	.3115 .3095	7,912 7,861	.3090	7,85	.152 .147	3,86 3,73	.160	4,06	.427	10,85	.390	9,91
PLT215(**)-12-(*)	.3735	9,49	.500 .491	12,70 12,47			.510	12,95	.3745 .3725	9,512 9,462	.3720	9,45	.185 .180	4,70 4,57	.190	4,83	.516	13,11	.470	11,94

TABLE I (CONT.)

PART NUMBER	N MIN.		R RAD.						BREAK-OFF LIMITS		HOLE SIZE		PREVAILING TORQUE MIN.		DOUBLE SHEAR STRENGTH MIN.		TENSILE STRENGTH MIN.	
	INCH	mm	INCH	mm	INCH	mm	INCH	mm	INCH	mm	INCH	mm	IN-LBS	Nm	LBS.	daN	LBS.	daN
PLT215(**)-5-(*)	.272	6,90	.020 .010	0,51 0,25					+.088 +.000	+2,23 +0,00	.168 .165	4,27 4,19	1.0	0,113	3355	14900	900	4000
PLT215(**)-6-(*)	.340	8,63	.025 .015	0,63 0,38					+.098 +.010	+2,49 +0,25	.193 .190	4,90 4,82	1.5	0,170	4650	20600	1400	6230
PLT215(**)-8-(*)	.409	10,38	.025 .015	0,63 0,38					+.135 +.047	+3,43 +1,19	.252 .249	6,40 6,32	2.5	0,282	7770	34500	2100	9340
PLT215(**)-10-(*)	.479	12,16	.030 .015	0,76 0,38					+.146 +.043	+3,71 +1,09	.315 .312	8,00 7,92	3.5	0,400	12000	53400	3600	16010
PLT215(**)-12-(*)	.548	13,91	.030 .015	0,76 0,38					+.152 +.049	+3,86 +1,24	.378 .375	9,60 9,52	4.0	0,452	19500	86700	5600	24910

(*) SEE TABLE II FOR SECOND DASH NUMBER AND APPROVED CALLOUT.
 (**) DESIGNATES FINISH. SEE PART CODE EXAMPLE AND FINISH CALLOUT.

Fairchild
 CODE IDENT. NO.
92215

MONOGRAM
 CODE IDENT. NO.
98524

U.S. PATENT NO. 3643544, OTHER PATENTS PENDING.

APPROVED DATE
 27 JANUARY 1972

REV. LETTER AND DATE
"L" 11-19-01 ECN 1175

NOTICE: THIS DRAWING IS PART OF THE PROPRIETARY ARTICLE HEREIN DISCLOSED, OWNED BY MONOGRAM AEROSPACE FASTENERS, ANY PARTY BY ACCEPTING THIS DOCUMENT ASSUMES CUSTODY THEREOF AND AGREES: A. THE INFORMATION SET FORTH HEREIN IS GIVEN IN CONFIDENCE AND THIS DOCUMENT WILL NOT BE COPIED OR REPRODUCED IN WHOLE OR IN PART, NOR ITS CONTENTS REVEALED IN ANY MANNER TO ANY PERSON EXCEPT TO MEET THE PURPOSE FOR WHICH IT WAS DELIVERED. B. WITHOUT THE WRITTEN CONSENT OF MONOGRAM AEROSPACE FASTENERS, THIS DOCUMENT AND THE INFORMATION CONTAINED HEREIN UNDER NO CIRCUMSTANCES WILL BE USED IN THE MANUFACTURE OR REPRODUCTION OF THE ARTICLE DISCLOSED, AND DELIVERY OF THIS DOCUMENT SHALL NOT CONSTITUTE ANY RIGHT OR LICENSE TO DO SO.

TITLE
VISU-LOK, FASTENER, BLIND INTERNALLY THREADED, EXTERNAL SLEEVE ALLOY STEEL PROTRUDING HEAD, SELF LOCKING FRACTIONAL DIAMETER

STANDARD
PLT 215
SHEET 1 OF 2



TABLE II

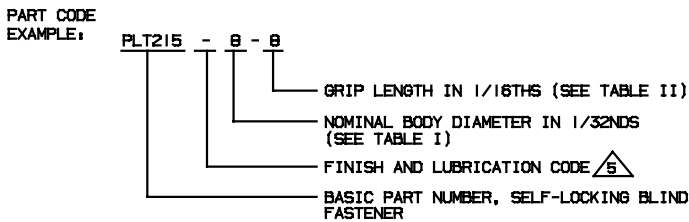
SECOND DASH NUMBER	G GRIP (a)		GRIP RANGE \triangle \triangle				L REF.							
			MIN.		MAX.		-6		-8					
	INCH	mm	INCH	mm	INCH	mm	INCH	mm	INCH	mm	INCH	mm		
-1	.093	2,36	.031	0,78	.093	2,37			.874	22,20	-	-		
-2	.156	3,96	.094	2,39	.156	3,96			.936	23,77	1.006	25,55		
-3	.219	5,56	.157	3,99	.219	5,56			.999	25,37	1.069	27,15		
-4	.281	7,14	.220	5,59	.281	7,14			1.061	26,95	1.131	28,73		
-5	.344	8,74	.282	7,16	.344	8,74			1.124	28,55	1.194	30,33		
-6	.406	10,31	.345	8,76	.406	10,31			1.186	30,12	1.256	31,90		
-7	.469	11,91	.407	10,34	.469	11,91			1.249	31,72	1.319	33,50		
-8	.531	13,49	.470	11,94	.531	13,49			1.311	33,30	1.381	35,08		
-9	.594	15,11	.532	13,51	.594	15,11			1.374	34,90	1.444	36,68		
-10	.656	16,66	.595	15,11	.656	16,66			1.436	36,47	1.506	38,25		
-11	.719	18,26	.657	16,69	.719	18,26			1.499	38,07	1.569	39,85		
-12	.781	19,84	.720	18,29	.781	19,84			1.561	39,65	1.631	41,43		
-13	.844	21,44	.782	19,86	.844	21,44			1.624	41,25	1.694	43,03		
-14	.906	23,01	.845	21,46	.906	23,01			1.686	42,82	1.756	44,60		
-15	.969	24,61	.907	23,04	.969	24,61			1.749	44,42	1.819	46,20		
-16	1.031	26,19	.970	24,64	1.031	26,19			1.811	46,00	1.881	47,78		
-17	1.094	27,79	1.032	26,21	1.094	27,79			1.874	47,60	1.944	49,38		
-18	1.156	29,36	1.095	27,81	1.156	29,36			1.936	49,17	2.006	50,95		
-19	1.219	30,96	1.157	29,39	1.219	30,96			1.999	50,77	2.069	52,55		
-20	1.281	32,54	1.220	30,99	1.281	32,54			2.061	52,35	2.131	54,13		
-21	1.344	34,14	1.282	32,56	1.344	34,14			2.124	53,95	2.194	55,73		
-22	1.406	35,71	1.345	34,16	1.406	35,71			2.186	55,52	2.256	57,30		
-23	1.469	37,31	1.407	35,74	1.469	37,31			2.249	57,12	2.319	58,90		
-24	1.531	38,89	1.470	37,34	1.531	38,89			2.311	58,70	2.381	60,48		
-25	1.594	40,49	1.532	38,91	1.594	40,49			2.374	60,30	2.444	62,08		
-26	1.656	42,06	1.595	40,51	1.656	42,06			2.436	61,87	2.506	63,65		
-27	1.719	43,66	1.657	42,09	1.719	43,66			2.499	63,47	2.569	65,25		
-28	1.781	45,24	1.720	43,69	1.781	45,24			2.561	65,05	2.631	66,83		
-29	1.844	46,84	1.782	45,26	1.844	46,84			2.624	66,65	2.694	68,43		
-30	1.906	48,41	1.845	46,86	1.906	48,41			2.686	68,22	2.756	70,00		
-31	1.969	50,01	1.907	48,44	1.969	50,01			2.749	69,82	2.819	71,60		
-32	2.031	51,59	1.970	50,04	2.031	51,59			2.811	71,40	2.881	73,18		

(a) "G" TOLERANCES: FOR -6 SIZES $+0.030$ $+0.762$; FOR -8 SIZES $+0.040$ $+1.016$
 $-.010$ -0.254 ; $-.010$ -0.254

PROCUREMENT SPECIFICATION: ESCBB-2, CLASS I EXCEPT AS NOTED HEREIN.
 MATERIAL: NUT & SCREW: ALLOY STEEL, 4130 PER MIL-S-6758, 4140 PER MIL-S-5626, OR 8740 PER MIL-S-6049.
 SLEEVE: CORROSION RESISTANT STEEL, 303 OR 304 PER QQ-S-763, AMS 5639, OR AMS 5641.
 HEAT TREAT: NUT & SCREW: HEAT TREAT PER MIL-H-6875. APPROXIMATELY 180,000 TO 200,000 PSI (1240 TO 1380 N/mm²) TENSILE (R_e 39-43).
 SLEEVE: AS REQUIRED FOR PERFORMANCE
 FINISH: NUT & SCREW: CADMIUM PLATE PER QQ-P-416, TYPE II, CLASS 2. CADMIUM PLATE PER NAS 672 IS PERMISSIBLE PROVIDED IT IS FOLLOWED BY A DICHROMATE POST TREATMENT PER QQ-P-416.
 SLEEVE: PASSIVATE PER MIL-S-5002. CADMIUM PLATE PER QQ-P-416, TYPE I, CLASS 3.
 LUBRICATION: LUBRICANTS LISTED BELOW MAY BE APPLIED TO ANY OR ALL COMPONENTS IF REQUIRED FOR PERFORMANCE:
 NUT: W/M CARBO-WAX, PARAFFIN WAX AND/OR CETYL ALCOHOL PER MIL-L-87132.
 SCREW & SLEEVE: DRY FILM LUBE MOS₂ PER MIL-L-46010 OR MIL-L-81329, W/M CARBO-WAX, PARAFFIN WAX AND/OR CETYL ALCOHOL PER MIL-L-87132.

GENERAL NOTES:

- 1 \triangle OUTSIDE DIAMETER OF HEAD OF SCREW AND OUTSIDE DIAMETER OF SLEEVE SHALL NOT BE GREATER THAN MAXIMUM "E" DIAMETER.
- 2 REMOVE ALL LOOSE OR HANGING BURRS.
- 3 \triangle LOCKING FEATURE CONSISTS OF THREE (3) INDENTATIONS LOCATED 120° APART ON THE PERIPHERY OF THE NUT COMPONENT AND APPROXIMATELY .040 IN. (1.02 mm) ABOVE THE INTERSECTION OF THE NUT NOSE ANGLE AND O.D. (MEAN GRIP OF FASTENER).
- 4 HEAD MARKING ON NUT DEPRESSED .010 IN. (0,26 mm) MAXIMUM.
- 5 \triangle STANDARD FINISHES AND LUBRICANTS AS SHOWN ON LEFT. REFER TO SPECIFICATION ESCBB-4 FOR SPECIAL FINISHES AND/OR LUBRICANTS, IF REQUIRED
- 6 \triangle DISTORTION OF "D" DIAMETER SHALL NOT PREVENT INSERTION OF THE FASTENER INTO A RING GAUGE OF LENGTH EQUAL TO ONE DIAMETER AND DIAMETER EQUAL TO MAXIMUM "D" + .001". FORCE FOR INSERTION SHALL NOT EXCEED FIVE (5) POUNDS (22,23 NEWTONS)
- 7 \triangle HALF-GRIP SIZES MAY BE ORDERED BY ADDING (.5) TO THE GRIP DASH NUMBERS
 EXAMPLE: PLT15-6-4.5 INDICATES A NOMINAL GRIP LENGTH OF 4.5 16THS (.281" = 7.14mm) THE GRIP RANGE FOR THESE HALF GRIP SIZES WILL BE NOMINAL GRIP +.031/-0.030 (+0.79/-0.76 mm)
 THE BASIC "G" DIMENSION WILL BE MAXIMUM GRIP +.031 (+0.79mm) AND THE OVERALL SCREW LENGTH "L" DIMENSION MAY VARY AT THE MANUFACTURER'S OPTION
- 8 \triangle STANDARD GRIP LENGTHS ARE SHOWN IN TABLE II, SHORTER OR LONGER GRIPS THAN THOSE LISTED MAY BE AVAILABLE AS SPECIALS. ON GRIP LENGTHS SHORTER THAN THOSE LISTED, THE BREAKOFF LIMITS AND PREVAILING TORQUE VALUES SHOWN IN TABLE I DO NOT APPLY.
9. DIMENSIONS ARE EXCLUSIVE OF LUBRICATION.
- 10 \triangle THE PREVAILING TORQUE SHALL CONFORM TO THE VALUES AS TABULATED, WHEN TESTED IN ACCORDANCE WITH SPECIFICATION ESCBB-2. HOWEVER, PREVAILING TORQUES FOR THE PLT215-6-1 SHALL BE RECORDED THRU A ROTATION OF ONLY 360° OF THE NUT.
- 11 \triangle PLT215-5-(*) IS EQUIVALENT TO PLT210-5-(*)
 PLT215-10-(*) IS EQUIVALENT TO PLT210-10-(*)
 PLT215-12-(*) IS EQUIVALENT TO PLT210-12-(*)



Fairchild
 CODE IDENT. NO.
92215

MONOGRAM
 CODE IDENT. NO.
98524

U.S. PATENT NO. 3643544, OTHER PATENTS PENDING.

APPROVED DATE
 27 JANUARY 1972
 REV. LETTER AND DATE
 "L" 11-19-01 EDN 1175

NOTICE: THIS DRAWING IS PART OF THE PROPRIETARY ARTICLE HEREIN DISCLOSED. OWNED BY MONOGRAM AEROSPACE FASTENERS. ANY PARTY BY ACCEPTING THIS DOCUMENT ASSUMES CUSTODY THEREOF AND AGREES: A. THE INFORMATION SET FORTH HEREIN IS GIVEN IN CONFIDENCE AND THIS DOCUMENT WILL NOT BE COPIED OR REPRODUCED IN WHOLE OR IN PART, NOR ITS CONTENTS REVEALED IN ANY MANNER TO ANY PERSON EXCEPT TO MEET THE PURPOSE FOR WHICH IT WAS DELIVERED. B. WITHOUT THE WRITTEN CONSENT OF MONOGRAM AEROSPACE FASTENERS, THIS DOCUMENT AND THE INFORMATION CONTAINED HEREIN UNDER NO CIRCUMSTANCES WILL BE USED IN THE MANUFACTURE OR REPRODUCTION OF THE ARTICLE DISCLOSED, AND DELIVERY OF THIS DOCUMENT SHALL NOT CONSTITUTE ANY RIGHT OR LICENSE TO DO SO.

TITLE
VISU-LOK, FASTENER, BLIND INTERNALLY THREADED, EXTERNAL SLEEVE ALLOY STEEL PROTRUDING HEAD, SELF LOCKING FRACTIONAL DIAMETER

STANDARD
PLT 215
 SHEET 2 OF 2