

Printed copies are for reference only.

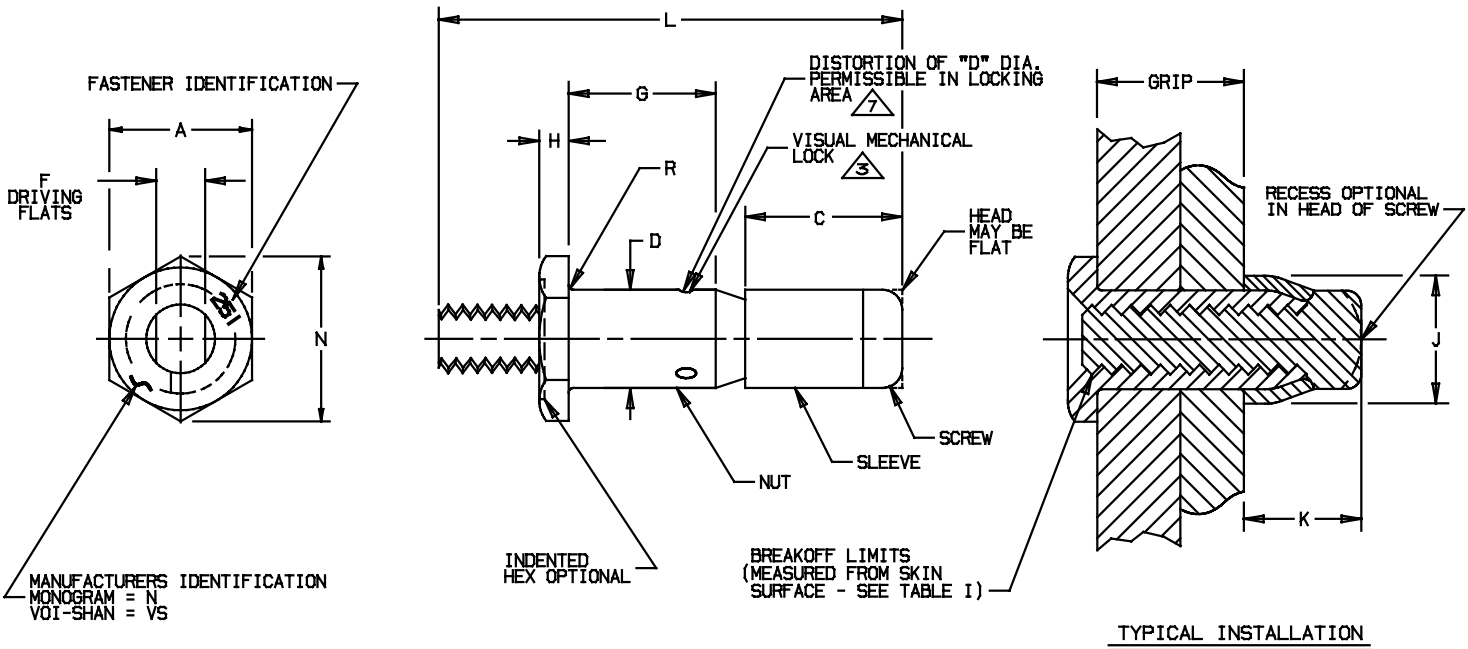


TABLE I

PART NUMBER	NOM. DIA.		A		C MAX.		D DIA.		F FLATS		H MAX.		J DIA. MAX.		K MAX.		N MIN.	
	INCH	mm	INCH	mm	INCH	mm	INCH	mm	INCH	mm	INCH	mm	INCH	mm	INCH	mm	INCH	mm
PLT251-5-(*)	.1790	4,547	.250 .244	6,35 6,19	.315	8,00	.1800 .1780	4,572 4,521	.086 .081	2,19 2,05	.096	2,44	.244	6,20	.300	7,62	.272	6,90
PLT251-6-(*)	.2140	5,436	.312 .305	7,93 7,74	.350	8,89	.2150 .2130	5,461 5,410	.104 .099	2,65 2,51	.113	2,88	.300	7,62	.333	8,46	.340	8,63
PLT251-8-(*)	.2750	6,985	.375 .367	9,53 9,32	.385	9,78	.2760 .2740	7,011 6,959	.135 .130	3,43 3,30	.135	3,43	.384	9,76	.366	9,30	.409	10,38
PLT251-10-(*)	.3260	8,280	.437 .429	11,10 10,89	.470	11,94	.3270 .3250	8,306 8,255	.152 .147	3,87 3,73	.160	4,07	.427	10,85	.447	11,36	.479	12,16
PLT251-12-(*)	.3890	9,881	.500 .491	12,70 12,47	.555	14,10	.3900 .3880	9,906 9,855	.185 .180	4,70 4,57	.190	4,83	.516	13,11	.527	13,39	.548	13,91

TABLE I (CONT.)

PART NUMBER	R RAD.		BREAK-OFF LIMITS Δ		HOLE SIZE		PREVAILING TORQUE MIN. Δ		DOUBLE SHEAR STRENGTH MIN.		TENSILE STRENGTH MIN.	
	INCH	mm	INCH	mm	INCH	mm	IN-LB	Nm	LBS.	daN	LBS.	daN
PLT251-5-(*)	.025 .020	0,64 0,50	+0,088 +0,000	+2,24 +0,00	.183 .180	4,65 4,57	1,0	0,11	4680	2080	1350	600
PLT251-6-(*)	.030 .025	0,77 0,63	+0,098 +0,010	+2,49 +0,25	.218 .215	5,54 5,46	1,5	0,16	6900	3060	2100	930
PLT251-8-(*)	.035 .030	0,89 0,76	+1,135 +0,047	+3,43 +1,19	.279 .276	7,09 7,01	2,5	0,28	11800	5240	3650	1620
PLT251-10-(*)	.045 .035	1,15 0,88	+1,146 +0,043	+3,71 +1,19	.330 .327	8,38 8,30	3,5	0,39	17000	7560	5200	2310
PLT251-12-(*)	.045 .035	1,15 0,88	+1,152 +0,049	+3,87 +1,24	.393 .390	9,98 9,90	4,0	0,45	24500	10890	7500	3330

(*) SEE TABLE II FOR SECOND DASH NUMBERS AND APPROVED CALLOUT.

PART CODE EXAMPLE:

PLT251 L 8 - 8

- GRIP LENGTH IN 16THS OF AN INCH (1.59 mm).
- NOMINAL BODY DIAMETER IN 1/32NDS OF AN INCH (0,79 mm).
- FINISH/LUBE CODE (SEE ESCBB-4).
- BASIC PART NUMBER, SELF-LOCKING BLIND FASTENER.

U.S. PATENT NO. 3643544.

Fairchild
 CODE IDENT. NO.
5M902

MONOGRAM
 CODE IDENT. NO.
98524

APPROVED DATE
 21 APRIL 1971

NOTICE: THIS DRAWING IS PART OF THE PROPRIETARY ARTICLE HEREIN DISCLOSED. OWNED BY MONOGRAM AEROSPACE FASTENERS. ANY PARTY BY ACCEPTING THIS DOCUMENT ASSUMES CUSTODY THEREOF AND AGREES: A. THE INFORMATION SET FORTH HEREIN IS GIVEN IN CONFIDENCE AND THIS DOCUMENT WILL NOT BE COPIED OR REPRODUCED IN WHOLE OR IN PART, NOR ITS CONTENTS REVEALED IN ANY MANNER TO ANY PERSON EXCEPT TO MEET THE PURPOSE FOR WHICH IT WAS DELIVERED. B. WITHOUT THE WRITTEN CONSENT OF MONOGRAM AEROSPACE FASTENERS, THIS DOCUMENT AND THE INFORMATION CONTAINED HEREIN UNDER NO CIRCUMSTANCES WILL BE USED IN THE MANUFACTURE OR REPRODUCTION OF THE ARTICLE DISCLOSED, AND DELIVERY OF THIS DOCUMENT SHALL NOT CONSTITUTE ANY RIGHT OR LICENSE TO DO SO.

TITLE
 VISU-LOK, FASTENER, BLIND INTERNALLY THREADED, EXTERNAL SLEEVE HIGH STRENGTH, 5% CHROME STEEL (H-11) PROTRUDING HEAD, SELF-LOCKING 1/64 INCH (0,40 mm) OVERSIZE

STANDARD
PLT251
 SHEET 1 OF 2



TABLE II

SECOND DASH NUMBER	GRIP RANGE Δ Δ				G GRIP (a)		L REF.								
	MIN.		MAX.				-5		-6		-8		-10		-12
	INCH	mm	INCH	mm	INCH	mm	INCH	mm	INCH	mm	INCH	mm	INCH	mm	
-1	.031	0,79	.093	2,37	.093	2,37	.713	18,11	.850	21,59					
-2	.094	2,38	.156	3,97	.156	3,96	.775	19,68	.912	23,16	.972	24,69	1.189	30,20	
-3	.157	3,98	.219	5,57	.219	5,56	.838	21,29	.975	24,76	1.035	26,29	1.252	31,80	1.324
-4	.220	5,58	.281	7,14	.281	7,14	.900	22,86	1.037	26,34	1.097	27,86	1.314	33,38	1.386
-5	.282	7,15	.344	8,74	.344	8,74	.963	24,46	1.100	27,94	1.160	29,46	1.377	34,98	1.449
-6	.345	8,75	.406	10,32	.406	10,31	1.025	26,04	1.162	29,51	1.222	31,04	1.439	36,55	1.511
-7	.407	10,33	.469	11,92	.469	11,91	1.088	27,64	1.225	31,12	1.285	32,64	1.502	38,15	1.574
-8	.470	11,93	.531	13,49	.531	13,49	1.150	29,21	1.287	32,69	1.347	34,21	1.564	39,73	1.636
-9	.532	13,50	.594	15,09	.594	15,09	1.213	30,81	1.350	34,29	1.410	34,81	1.627	41,33	1.699
-10	.595	15,10	.656	16,67	.656	16,66	1.275	32,38	1.412	35,86	1.472	37,39	1.689	42,90	1.761
-11	.657	16,68	.719	18,27	.719	18,26	1.338	33,99	1.475	37,46	1.535	38,99	1.752	44,50	1.824
-12	.720	18,28	.781	19,84	.781	19,84	1.400	35,56	1.537	39,04	1.597	40,56	1.814	46,06	1.886
-13	.782	19,85	.844	21,44	.844	21,44	1.463	37,16	1.600	40,64	1.660	42,16	1.877	47,68	1.949
-14	.845	21,45	.906	23,02	.906	23,01	1.525	38,74	1.662	42,21	1.722	43,74	1.939	49,25	2.011
-15	.907	23,03	.969	24,62	.969	24,61	1.588	40,34	1.725	43,82	1.785	45,34	2.002	50,85	2.074
-16	.970	24,63	1.031	26,19	1.031	26,19	1.650	41,91	1.787	45,39	1.847	46,91	2.064	52,43	2.136
-17	1.032	26,20	1.094	27,79	1.094	27,79			1.850	46,99	1.910	48,51	2.127	54,03	2.199
-18	1.095	27,80	1.156	29,37	1.156	29,36			1.912	48,56	1.972	50,09	2.189	55,60	2.261
-19	1.157	29,38	1.219	30,97	1.219	30,96			1.975	50,16	2.035	51,69	2.252	57,20	2.324
-20	1.220	30,98	1.281	32,54	1.281	32,54			2.037	51,74	2.097	53,26	2.314	58,78	2.386
-21	1.282	32,55	1.344	34,14	1.344	34,14			2.100	53,34	2.160	54,86	2.377	60,38	2.449
-22	1.345	34,15	1.406	35,72	1.406	35,71			2.165	54,91	2.222	56,44	2.439	61,95	2.511
-23	1.407	35,73	1.469	37,32	1.469	37,31			2.225	56,52	2.285	58,04	2.502	63,55	2.574
-24	1.470	37,33	1.531	38,89	1.531	38,89			2.287	58,09	2.347	59,61	2.564	65,13	2.636
-25	1.532	38,90	1.594	40,49	1.594	40,49			2.350	59,69	2.410	61,21	2.627	66,73	2.699
-26	1.595	40,50	1.656	42,07	1.656	42,06			2.412	61,26	2.472	62,79	2.689	68,30	2.761
-27	1.657	42,08	1.719	43,67	1.719	43,66			2.475	62,86	2.535	64,39	2.752	69,90	2.824
-28	1.720	43,68	1.781	45,24	1.781	45,24			2.537	64,44	2.597	65,96	2.814	71,48	2.886
-29	1.782	45,25	1.844	46,84	1.844	46,84			2.600	66,04	2.660	67,56	2.877	73,08	2.949
-30	1.845	46,85	1.906	48,42	1.906	48,41			2.662	67,61	2.722	69,14	2.939	74,65	3.011
-31	1.907	48,43	1.969	50,02	1.969	50,01			2.725	69,22	2.785	70,74	3.002	76,25	3.074
-32	1.970	50,03	2.031	51,59	2.031	51,59			2.787	70,79	2.847	72,31	3.064	77,83	3.136

(a) "G" TOLERANCES: FOR -5 & -6 SIZES $+0.030$ ($+0,762$); FOR -8 & -10 SIZES $+0.040$ ($+1,016$); FOR -12 SIZES $+0.050$ ($+1,270$)
 -0.010 ($-0,254$); -0.010 ($-0,254$); -0.010 ($-0,254$)

PROCUREMENT SPECIFICATION: ESCBB-10 EXCEPT AS SPECIFIED HEREIN.

MATERIAL: NUT & SCREW: 5% CHROME STEEL (H-11) PER AMS6487.
 SLEEVE: INCONEL X-750 PER AMS5667 OR AMS5682;
 OR A-286 PER AMS5731, AMS5732 OR AMS5737.

HEAT TREAT: NUT & SCREW: ROCKWELL "C" 48-53.
 SLEEVE: AS REQUIRED FOR PERFORMANCE.

FINISH: "N" NUT & SCREW: CADMIUM PLATE PER NAS672 (.0003 MIN THICKNESS) EXCEPT THERMAL INDICATOR MAY BE OMITTED.
 SUPPLEMENTARY CHROMATE TREATMENT PER QQ-P-416 AFTER BAKE, COLOR NUT BLUE.

SLEEVE: CADMIUM PLATE PER QQ-P-416, TYPE I OR TYPE II, CLASS 2 OR CLASS 3.

"L" NUT & SLEEVE: ALUMINUM COAT PER NAS 4006.
 SCREW: CADMIUM PLATE PER NAS672 (.0003 MIN THICKNESS) EXCEPT THERMAL INDICATOR MAY BE OMITTED.
 SUPPLEMENTARY CHROMATE TREATMENT PER QQ-P-416 AFTER BAKE.

LUBRICATION: LUBRICANTS LISTED BELOW MAY BE APPLIED TO ANY OR ALL COMPONENTS IF REQUIRED FOR PERFORMANCE: DRY FILM LUBE MoS2 PER MIL-L-46010 TYPE I OR EVERLUBE 812 PER MIL-L-81329, PARAFFIN WAX, CETYL ALCOHOL PER MIL-L-87132, AND/OR W/M CARBO-WAX.

GENERAL NOTES:

- OUTSIDE DIAMETER OF HEAD OF SCREW AND OUTSIDE DIAMETER OF SLEEVE SHALL NOT BE GREATER THAN MAXIMUM "D" DIAMETER.
- FASTENERS SHALL BE FREE OF ALL LOOSE OR HANGING BURRS.
- LOCKING FEATURE CONSISTS OF THREE (3) INDENTATIONS LOCATED 120° APART ON THE PERIPHERY OF THE NUT COMPONENT AND APPROXIMATELY .040 IN. (1,02 mm) ABOVE THE INTERSECTION OF THE NUT NOSE ANGLE AND O.D. (MEAN GRIP OF FASTENER).
- STANDARD FINISHES AND LUBRICANTS ARE SHOWN ABOVE. SEE ESCBB-4 FOR SPECIAL FINISHES AND/OR LUBRICANTS, IF REQUIRED.
- STANDARD GRIP LENGTHS ARE SHOWN IN TABLE II. SHORTER OR LONGER GRIPS THAN THOSE LISTED MAY BE AVAILABLE AS SPECIALS. ON GRIP LENGTHS SHORTER THAN THOSE LISTED, THE BREAKOFF LIMITS AND PREVAILING TORQUE VALUES SHOWN IN TABLE I DO NOT APPLY.
- HALF-GRIP SIZES MAY BE ORDERED BY ADDING (.5) TO THE GRIP DASH NUMBERS EXAMPLE: PLT251-6-4.5 INDICATES A NOMINAL GRIP LENGTH OF 4.5 16THS (.281" = 7,14mm) THE GRIP RANGE FOR THESE HALF GRIP SIZES WILL BE NOMINAL GRIP $+0.031/-0.030$ ($+0,79/-0,79$ mm); THE BASIC "G" DIMENSION WILL BE MAXIMUM GRIP ± 0.031 ($\pm 0,79$ mm) AND THE OVERALL SCREW LENGTH "L" DIMENSION MAY VARY AT THE MANUFACTURER'S OPTION
- DISTORTION OF "D" DIAMETER SHALL NOT PREVENT INSERTION OF THE FASTENER INTO A RING GAUGE OF LENGTH EQUAL TO ONE DIAMETER AND DIAMETER EQUAL TO MAXIMUM "D" $+0.001$ ". FORCE FOR INSERTION SHALL NOT EXCEED FIVE (5) POUNDS (22,23 NEWTONS)
- HEAD MARKINGS ON NUT DEPRESSED .010 MAX., LOCATION OPTIONAL.
- DIMENSIONS ARE EXCLUSIVE OF LUBRICATION.

Fairchild

CODE IDENT. NO.
5M902

U.S. PATENT NO. 3643544.

MONOGRAM

CODE IDENT. NO.
98524

APPROVED DATE
21 APRIL 1971

NOTICE: THIS DRAWING IS PART OF THE PROPRIETARY ARTICLE HEREIN DISCLOSED, OWNED BY MONOGRAM AEROSPACE FASTENERS. ANY PARTY BY ACCEPTING THIS DOCUMENT ASSUMES CUSTODY THEREOF AND AGREES:
 A. THE INFORMATION SET FORTH HEREIN IS GIVEN IN CONFIDENCE AND THIS DOCUMENT WILL NOT BE COPIED OR REPRODUCED IN WHOLE OR IN PART, NOR ITS CONTENTS REVEALED IN ANY MANNER TO ANY PERSON EXCEPT TO MEET THE PURPOSE FOR WHICH IT WAS DELIVERED.
 B. WITHOUT THE WRITTEN CONSENT OF MONOGRAM AEROSPACE FASTENERS, THIS DOCUMENT AND THE INFORMATION CONTAINED HEREIN UNDER NO CIRCUMSTANCES WILL BE USED IN THE MANUFACTURE OR REPRODUCTION OF THE ARTICLE DISCLOSED, AND DELIVERY OF THIS DOCUMENT SHALL NOT CONSTITUTE ANY RIGHT OR LICENSE TO DO SO.

TITLE
VISU-LOK, FASTENER, BLIND INTERNALLY THREADED, EXTERNAL SLEEVE HIGH STRENGTH, 5% CHROME STEEL (H-11) PROTRUDING HEAD, SELF-LOCKING 1/64 INCH (0,40 mm) OVERSIZE

STANDARD

PLT251

SHEET 2 OF 2

REV. LETTER AND DATE
ECN #1024
"P" 03-29-01