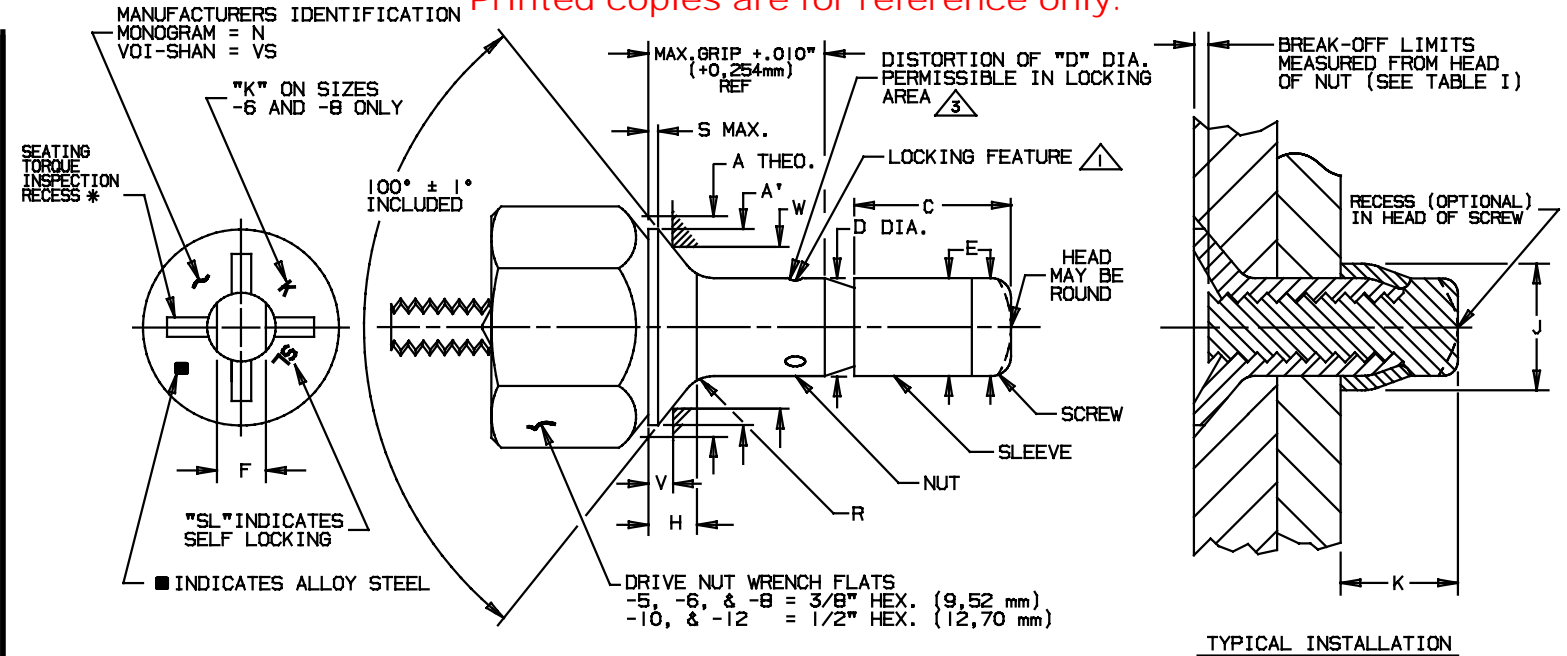


Printed copies are for reference only.



HEAD MARKING DEPRESSED .010 INCH (0,254 mm MAX.) (POSITION OPTIONAL)
 * DRIVE-NUT NOT SHOWN FOR CLARITY OF HEAD MARKINGS.

TABLE I

PART NUMBER	NOM. DIA.		A DIA. THEO.		A' DIA. MIN.		C MAX.		D DIA.		E DIA MAX.		F FLATS		H REF.		J DIA. MAX.		K REF.		R RAD.	
	INCH	mm	INCH	mm	INCH	mm	INCH	mm	INCH	mm	INCH	mm	INCH	mm	INCH	mm	INCH	mm	INCH	mm	INCH	mm
PLT 5115-5-()	.1635	4,153	.332 .325	8,43 8,25	.296	7,52	.268	6,81	.1645 .1625	4,178 4,128	.1620	4,12	.086 .081	2,18 2,06	.069	1,75	.244	6,20	.246	6,25	.030 .010	0,76 0,25
PLT 5115-6-()	.1890	4,800	.385 .378	9,78 9,60	.342	8,69	.303	7,70	.1900 .1880	4,826 4,775	.1875	4,77	.104 .099	2,64 2,52	.081	2,06	.300	7,62	.281	7,14	.030 .015	0,76 0,38
PLT 5115-8-()	.2480	6,300	.507 .499	12,88 12,67	.463	11,76	.354	8,99	.2490 .2470	6,325 6,274	.2465	6,27	.135 .130	3,43 3,30	.107	2,72	.384	9,75	.325	8,25	.030 .015	0,76 0,38
PLT 5115-10-()	.3105	7,887	.635 .626	16,13 15,95	.577	14,66	.423	10,74	.3115 .3095	7,912 7,861	.3090	7,85	.152 .147	3,86 3,73	.134	3,40	.427	10,85	.390	9,91	.040 .020	1,02 0,51
PLT 5115-12-()	.3735	9,487	.762 .752	19,35 19,10	.696	17,68	.510	12,95	.3745 .3725	9,512 9,462	.3720	9,45	.185 .180	4,70 4,57	.160	4,06	.516	13,11	.470	11,94	.040 .020	1,02 0,51

TABLE I (CONT.)

PART NUMBER	S MAX.		V GAGE PROT.		W GAGE DIA.		BREAK-OFF LIMITS		MINIMUM AVAILABLE GRIP LENGTH (TABLE II)	HOLE SIZE		PREVAILING TORQUE MIN.		DOUBLE SHEAR STRENGTH MIN.		TENSILE STRENGTH MIN.	
	INCH	mm	INCH	mm	INCH	mm	INCH	mm		INCH	mm	IN-LB	Nm	LBS.	N	LBS.	N
PLT 5115-5-()	.012	0,30	.0276 .0238	0,701 0,604	.2671 .2667	6,784 6,774	+.020 -.068	+0,51 -1,73	-2	.168 .165	4,27 4,19	1.0	0,113	3355	14900	900	4000
PLT 5115-6-()	.015	0,38	.0299 .0259	0,759 0,658	.3147 .3143	7,993 7,983	+.015 -.073	+0,38 -1,85	-2	.193 .190	4,90 4,82	1.5	0,170	4650	20600	1400	6230
PLT 5115-8-()	.015	0,38	.0353 .0307	0,897 0,780	.4245 .4241	10,782 10,772	+.010 -.078	+0,25 -1,98	-3	.252 .249	6,40 6,32	2.5	0,282	7770	34500	2100	9340
PLT 5115-10-()	.020	0,51	.0409 .0357	1,039 0,907	.5389 .5385	13,688 13,678	+.010 -.083	+0,25 -2,11	-3	.315 .312	8,00 7,92	3.5	0,400	12000	53400	3600	16010
PLT 5115-12-()	.023	0,58	.0466 .0407	1,184 1,034	.6532 .6528	16,591 16,581	+.010 -.093	+0,25 -2,36	-4	.378 .375	9,60 9,52	4.0	0,452	19500	86700	5600	24910

Fairchild
 CODE IDENT. NO.
5M902

U.S. PATENT NO. 3643544, 4747202 AND 4967463
 EUROPEAN PATENT NO. 0152531 AND 0216980

MONOGRAM
 CODE IDENT. NO.
98524

APPROVED DATE
 08-13-87 ECN 5069
 REV. LETTER AND DATE
7th 08-11-02 ECN 1445

NOTICE: THIS DRAWING IS PART OF THE PROPRIETARY ARTICLE HEREIN DISCLOSED, OWNED BY MONOGRAM AEROSPACE FASTENERS, ANY PARTY BY ACCEPTING THIS DOCUMENT ASSUMES CUSTODY THEREOF AND AGREES, A. THE INFORMATION SET FORTH HEREIN IS GIVEN IN CONFIDENCE AND THIS DOCUMENT WILL NOT BE COPIED OR REPRODUCED IN WHOLE OR IN PART, NOR ITS CONTENTS REVEALED IN ANY MANNER TO ANY PERSON EXCEPT TO MEET THE PURPOSE FOR WHICH IT WAS DELIVERED. B. WITHOUT THE WRITTEN CONSENT OF MONOGRAM AEROSPACE FASTENERS, THIS DOCUMENT AND THE INFORMATION CONTAINED HEREIN UNDER NO CIRCUMSTANCES WILL BE USED IN THE MANUFACTURE OR REPRODUCTION OF THE ARTICLE DISCLOSED, AND DELIVERY OF THIS DOCUMENT SHALL NOT CONSTITUTE ANY RIGHT OR LICENSE TO DO SO.

TITLE
 VISU-LOK® II FASTENER, BLIND
 INTERNALLY THREADED, EXTERNAL SLEEVE
 ALLOY STEEL
 100° FLUSH TENSION HEAD, SELF-LOCKING
 FRACTIONAL DIAMETER

STANDARD
PLT 5115
SHEET 1 OF 2

APPLICABLE SPECIFICATIONS:

PROCUREMENT SPECIFICATION = PLT 5000, CLASS I, TYPE I
 PART NUMBER ASSIGNMENT = PLT 5001
 INSTALLATION AND REMOVAL = PLT 5002
 SPECIAL LUBE AND FINISH = PLT 5003

MATERIAL: NUT & SCREW: ALLOY STEEL; 4130 PER MIL-S-6758, 4140 PER MIL-S-5626 OR 8740 PER MIL-S-6049
 SLEEVE: CORROSION RESISTANT STEEL; 303 OR 304 PER QQ-S-763, AMS 5639 OR AMS 5641
 DRIVE NUT: MILD STEEL

HEAT TREAT: NUT & SCREW: HEAT TREAT PER MIL-H-6875 APPROXIMATELY 180,000 TO 200,000 PSI (1240 TO 1380 N/mm²) TENSILE (RC 39-43)
 SLEEVE: AS REQUIRED FOR PERFORMANCE
 DRIVE NUT: AS REQUIRED FOR PERFORMANCE

FINISH: NUT & SCREW: CADMIUM PLATE PER QQ-P-416 TYPE II, CL. 2
 CADMIUM PLATE PER NAS 672 IS PERMISSIBLE PROVIDED IT IS FOLLOWED BY A DICHROMATE POST TREATMENT PER QQ-P-416
 SLEEVE: PASSIVATE PER MIL-S-5002 CADMIUM PLATE PER QQ-P-416 TYPE I, CL. 3
 DRIVE NUT: CORROSION RESISTANT COATING. COLOR GOLD

LUBRICATION: SOLID DRY FILM LUBRICANT PER THE CHEMICAL REQUIREMENTS OF MIL-L-46010 TYPE I OR EVERLUBE 812 PER MIL-L-81329, PARAFFIN WAX OR CETYL ALCOHOL PER MIL-L-87132 MAY BE APPLIED TO ANY OR ALL COMPONENTS AS REQUIRED FOR PERFORMANCE, (SEE PLT 5003 FOR SPECIAL LUBRICANTS AND FINISHES)

PART CODE & EXAMPLE: PLT 5115 -8 -8

GENERAL NOTES:

- ① LOCKING FEATURE CONSISTS OF THREE (3) INDENTATIONS LOCATED 120° APART ON THE PERIPHERY OF THE NUT COMPONENT
- ② HALF GRIP SIZES MAY BE ORDERED BY ADDING .5 TO THE GRIP DASH NUMBER
 EXAMPLE: PLT 5115-6-4.5 HAS A NOMINAL GRIP LENGTH OF 4-1/2 16THS (.281" = 7.14mm) AND A GRIP RANGE OF .250" THRU .312" (6.35mm THRU 7.92mm)
- ③ DISTORTION OF "D" DIAMETER SHALL NOT PREVENT INSERTION OF THE FASTENER INTO A RING GAUGE OF LENGTH EQUAL TO ONE DIAMETER AND DIAMETER EQUAL TO MINIMUM RECOMMENDED HOLE SIZE. FORCE FOR INSERTION SHALL NOT EXCEED FIVE (5) POUNDS (22.23 NEWTONS)
- ④ PLT5115-5-(*) IS EQUIVALENT TO PLT5110-5-(*)
 PLT5115-10-(*) IS EQUIVALENT TO PLT5110-10-(*)
 PLT5115-12-(*) IS EQUIVALENT TO PLT5110-12-(*)

TABLE II

2ND DASH NO.	GRIP RANGE ^②			
	MIN. GRIP		MAX. GRIP	
	INCH	mm	INCH	mm
-2	.094	2,39	.156	3,96
-3	.157	3,99	.219	5,56
-4	.220	5,59	.281	7,14
-5	.282	7,16	.344	8,74
-6	.345	8,76	.406	10,31
-7	.407	10,34	.469	11,91
-8	.470	11,94	.531	13,49
-9	.532	13,51	.594	15,09
-10	.595	15,11	.656	16,66
-11	.657	16,69	.719	18,26
-12	.720	18,29	.781	19,84
-13	.782	19,86	.844	21,44
-14	.845	21,46	.906	23,01
-15	.907	23,04	.969	24,61
-16	.970	24,64	1.031	26,19
-17	1.032	26,21	1.094	27,79
-18	1.095	27,81	1.156	29,36
-19	1.157	29,38	1.219	30,97
-20	1.220	30,98	1.281	32,54
-21	1.282	32,55	1.344	34,14
-22	1.345	34,15	1.406	35,72
-23	1.407	35,73	1.469	37,32
-24	1.470	37,33	1.531	38,89
-25	1.532	38,90	1.594	40,49
-26	1.595	40,50	1.656	42,07
-27	1.657	42,08	1.719	43,67
-28	1.720	43,68	1.781	45,24
-29	1.782	45,25	1.844	46,84
-30	1.845	46,85	1.906	48,42
-31	1.907	48,43	1.969	50,02
-32	1.970	50,03	2.031	51,59

Fairchild
 CODE IDENT. NO.
5M902

U.S. PATENT NO. 3643544, 4747202, AND 4967463
 EUROPEAN PATENT NO. 0152531 AND 0216980

MONOGRAM
 CODE IDENT. NO.
98524

APPROVED DATE
 08-13-87 ECN 5069

REV. LETTER AND DATE
D 08-11-02 ECN 1445

NOTICE: THIS DRAWING IS PART OF THE PROPRIETARY ARTICLE HEREIN DISCLOSED, OWNED BY MONOGRAM AEROSPACE FASTENERS, ANY PARTY BY ACCEPTING THIS DOCUMENT ASSUMES CUSTODY THEREOF AND AGREES:
 A. THE INFORMATION SET FORTH HEREIN IS GIVEN IN CONFIDENCE AND THIS DOCUMENT WILL NOT BE COPIED OR REPRODUCED IN WHOLE OR IN PART, NOR ITS CONTENTS REVEALED IN ANY MANNER TO ANY PERSON EXCEPT TO MEET THE PURPOSE FOR WHICH IT WAS DELIVERED.
 B. WITHOUT THE WRITTEN CONSENT OF MONOGRAM AEROSPACE FASTENERS, THIS DOCUMENT AND THE INFORMATION CONTAINED HEREIN UNDER NO CIRCUMSTANCES WILL BE USED IN THE MANUFACTURE OR REPRODUCTION OF THE ARTICLE DISCLOSED, AND DELIVERY OF THIS DOCUMENT SHALL NOT CONSTITUTE ANY RIGHT OR LICENSE TO DO SO.

TITLE
 VISU-LOK® II FASTENER, BLIND
 INTERNALLY THREADED, EXTERNAL SLEEVE
 ALLOY STEEL
 100° FLUSH TENSION HEAD, SELF-LOCKING
 FRACTIONAL DIAMETER

STANDARD
 PLT 5115
SHEET 2 OF 2